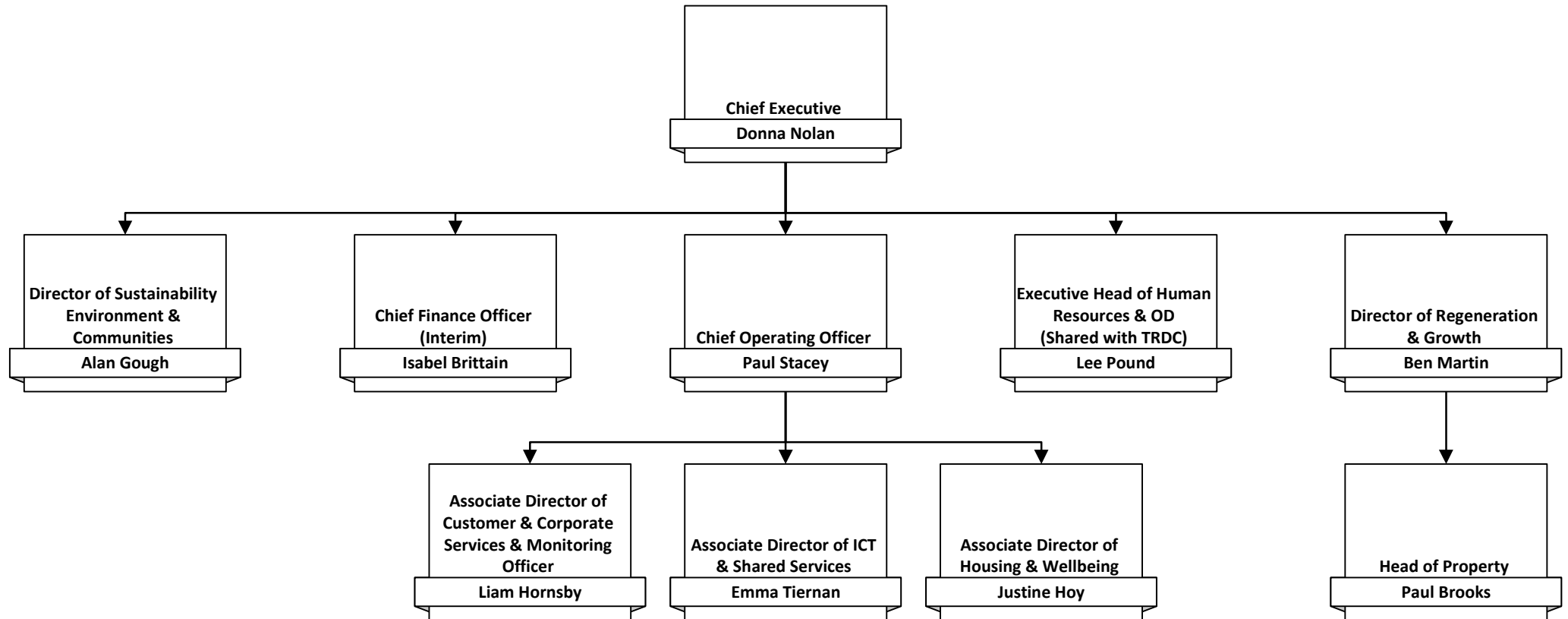
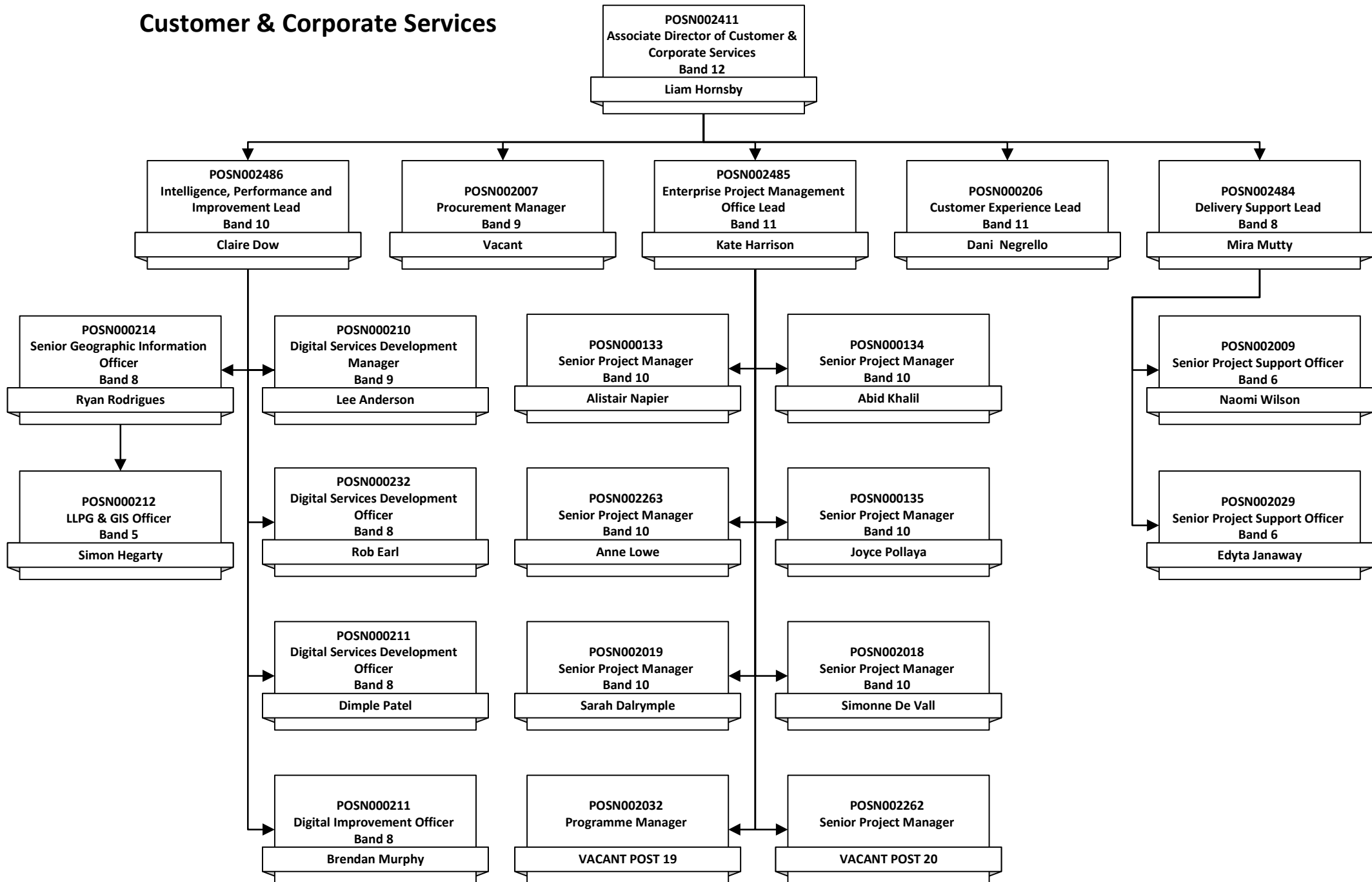


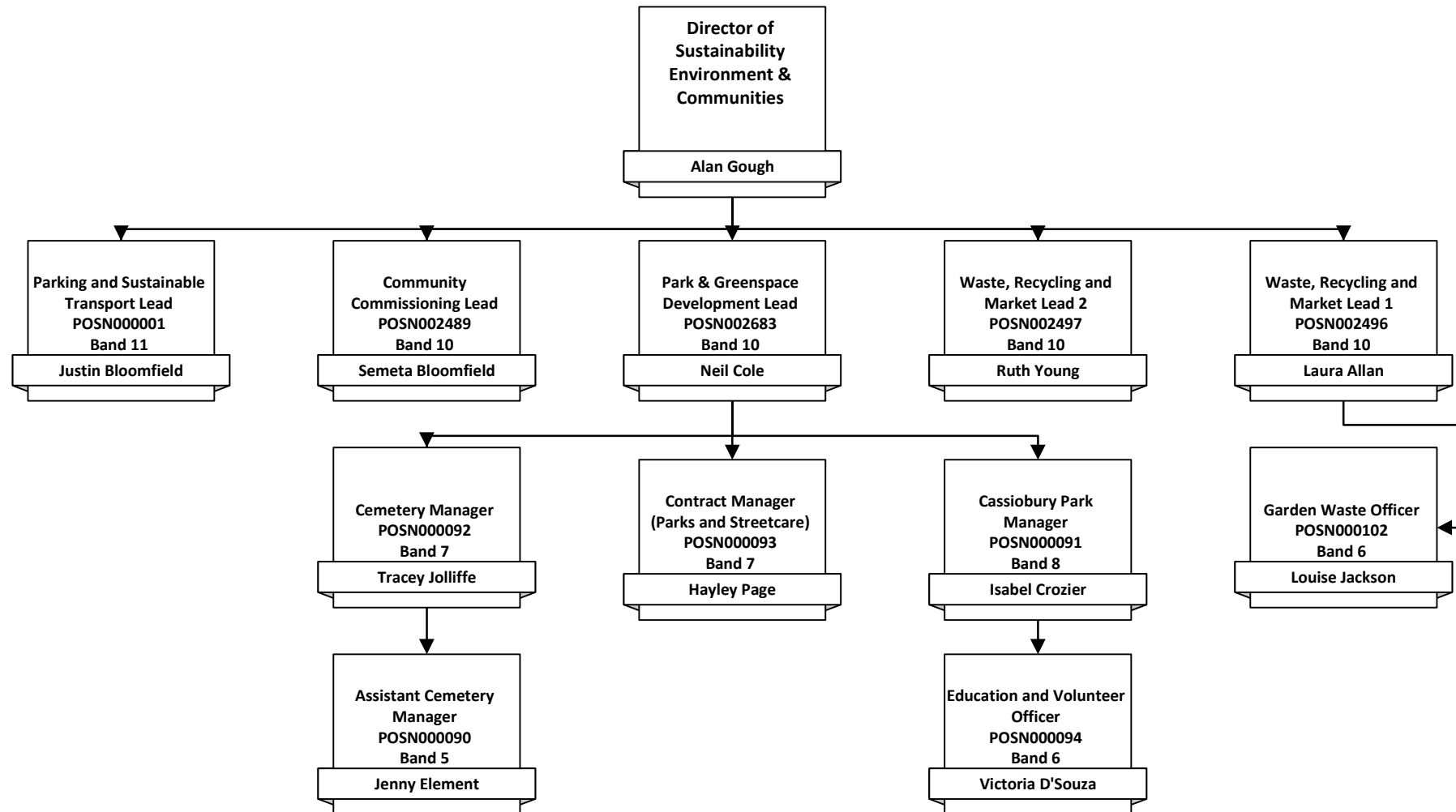
# Leadership



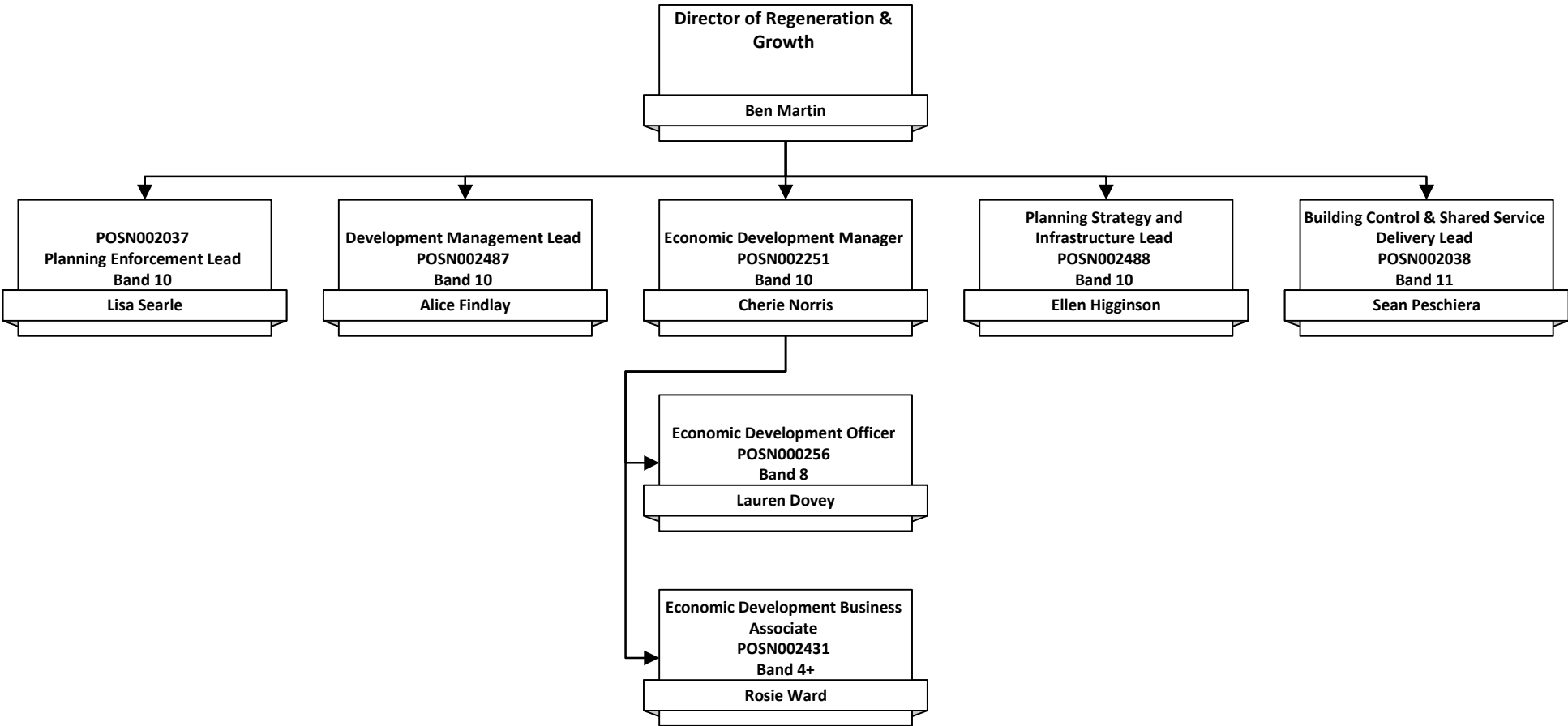
# Customer & Corporate Services



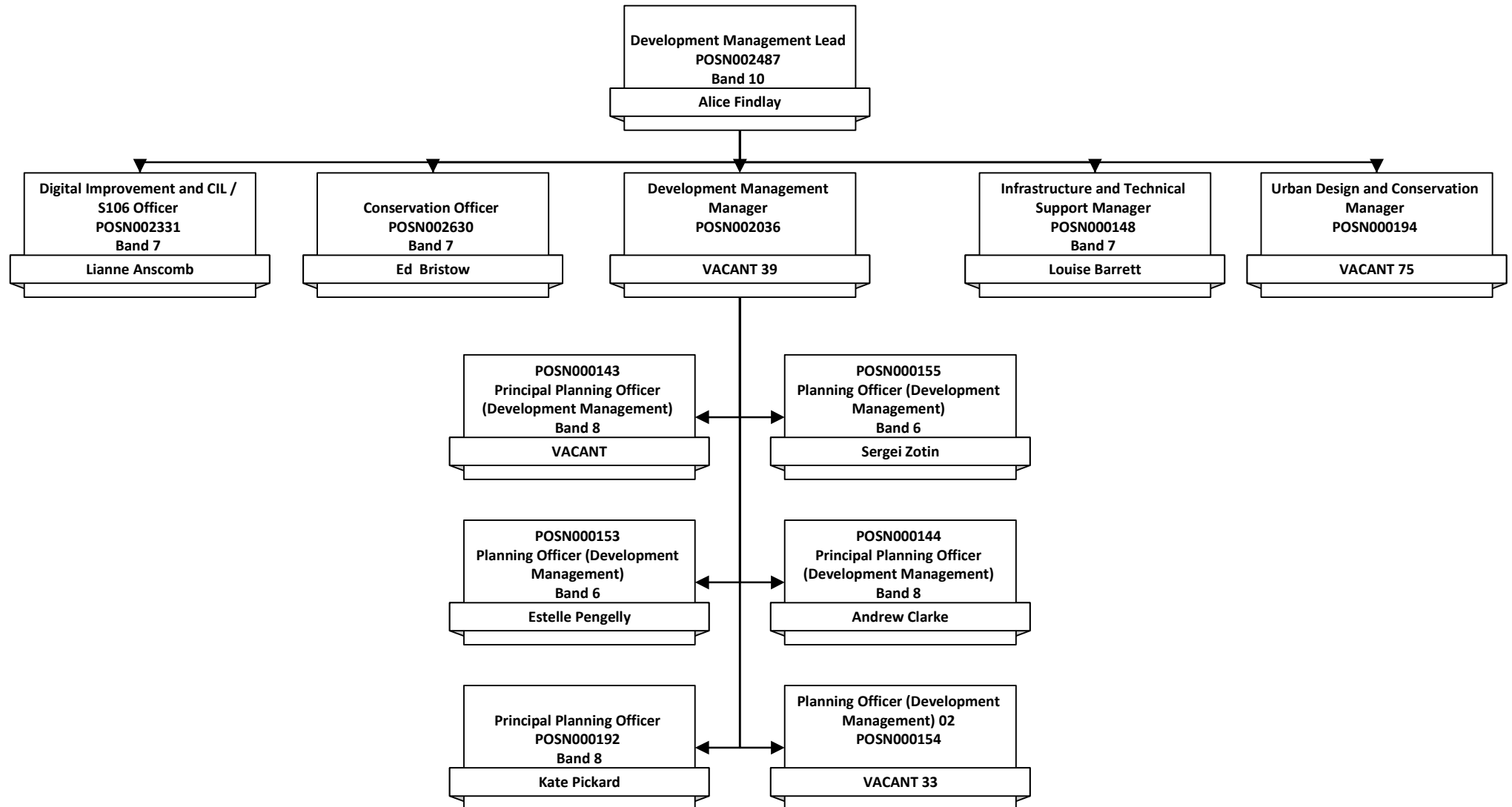
# Environment



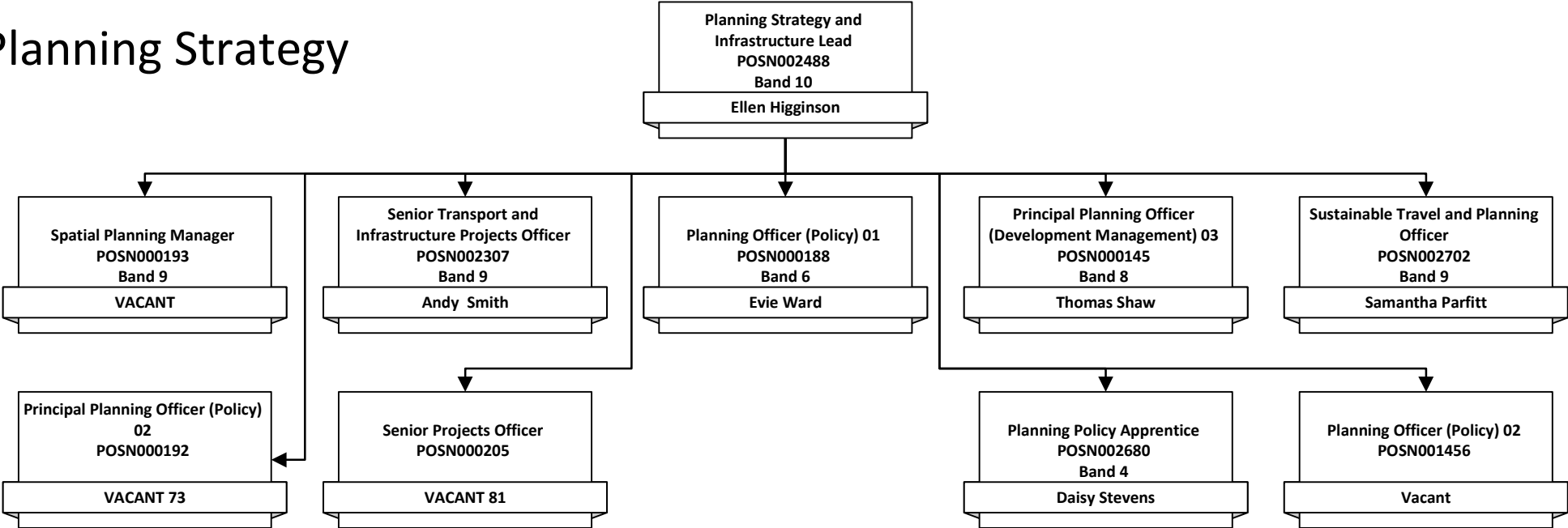
# Planning Infrastructure & Economy



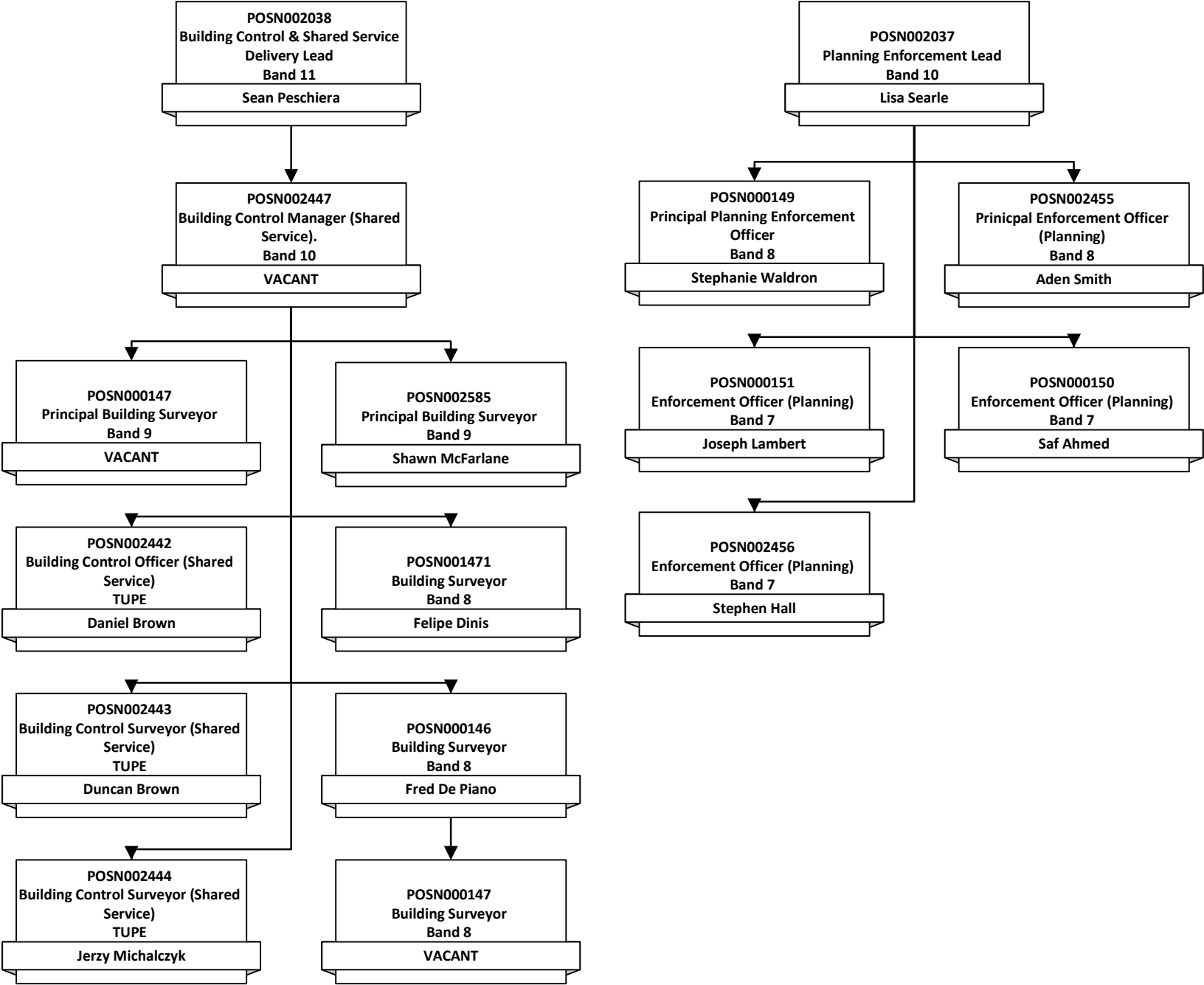
# Development Management



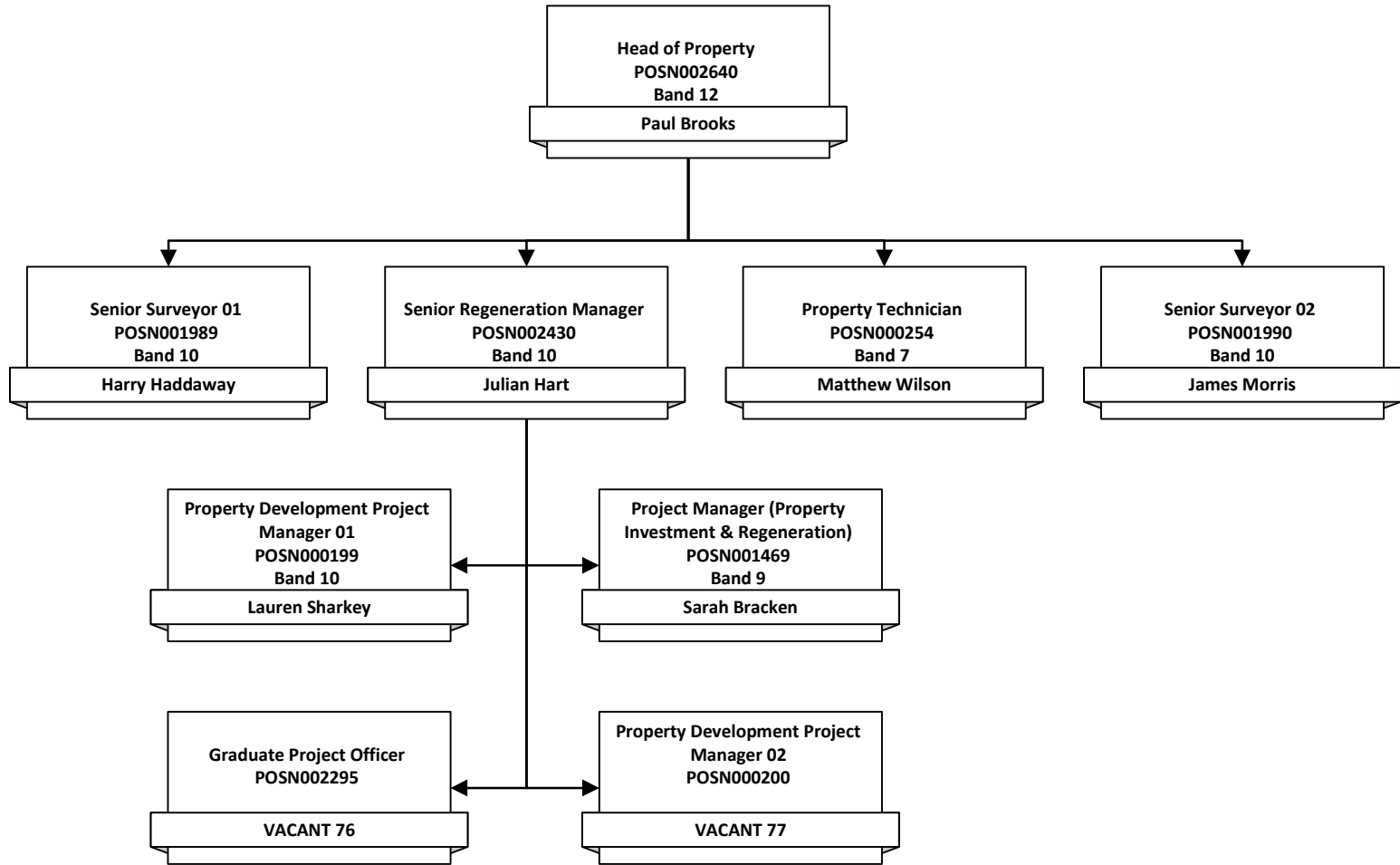
# Planning Strategy



# Building Control & Planning Enforcement



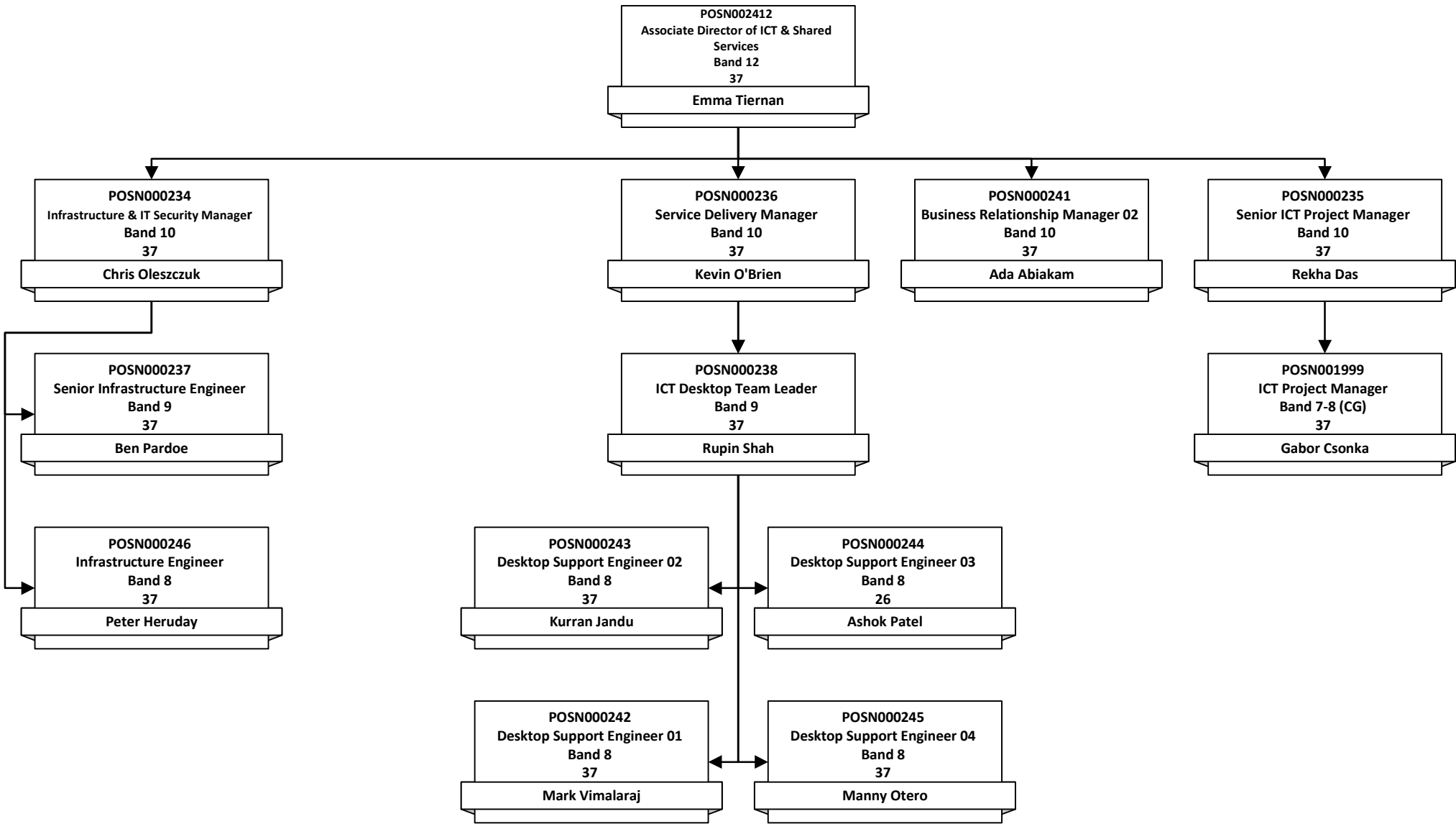
# Property & Asset Management



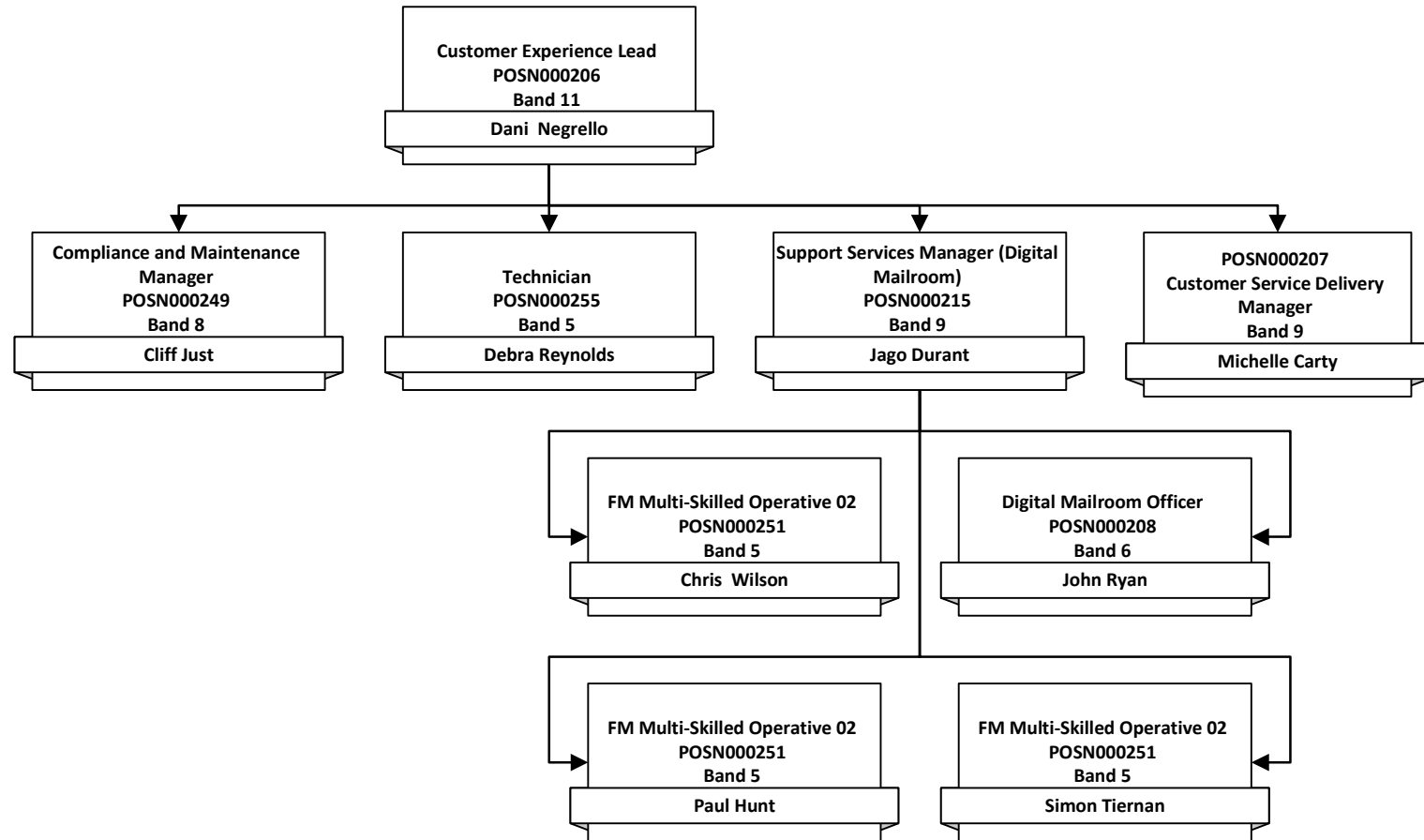


# ICT & Shared Services

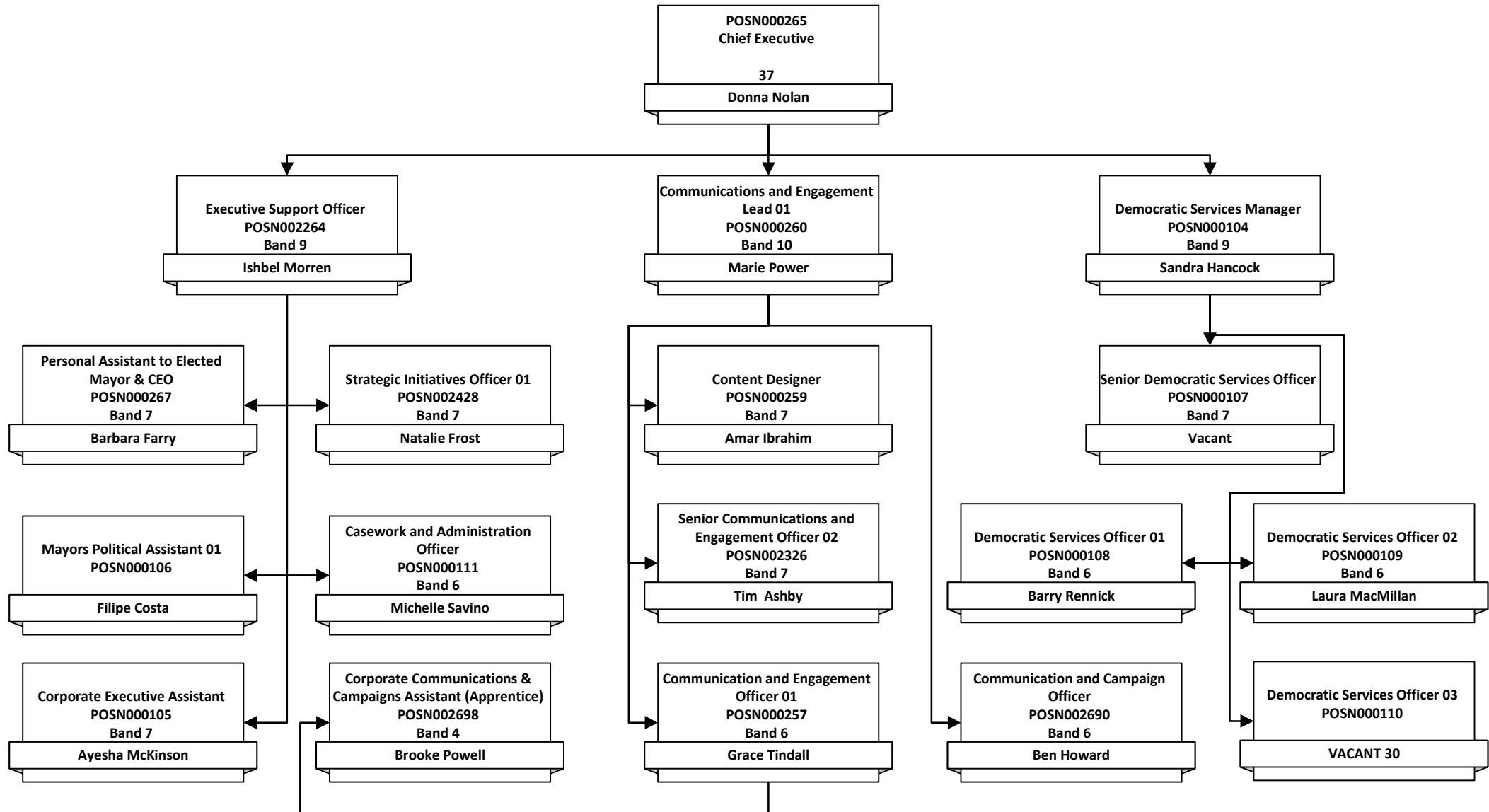
POSN000234  
Infrastructure & IT Security Manager  
0  
37



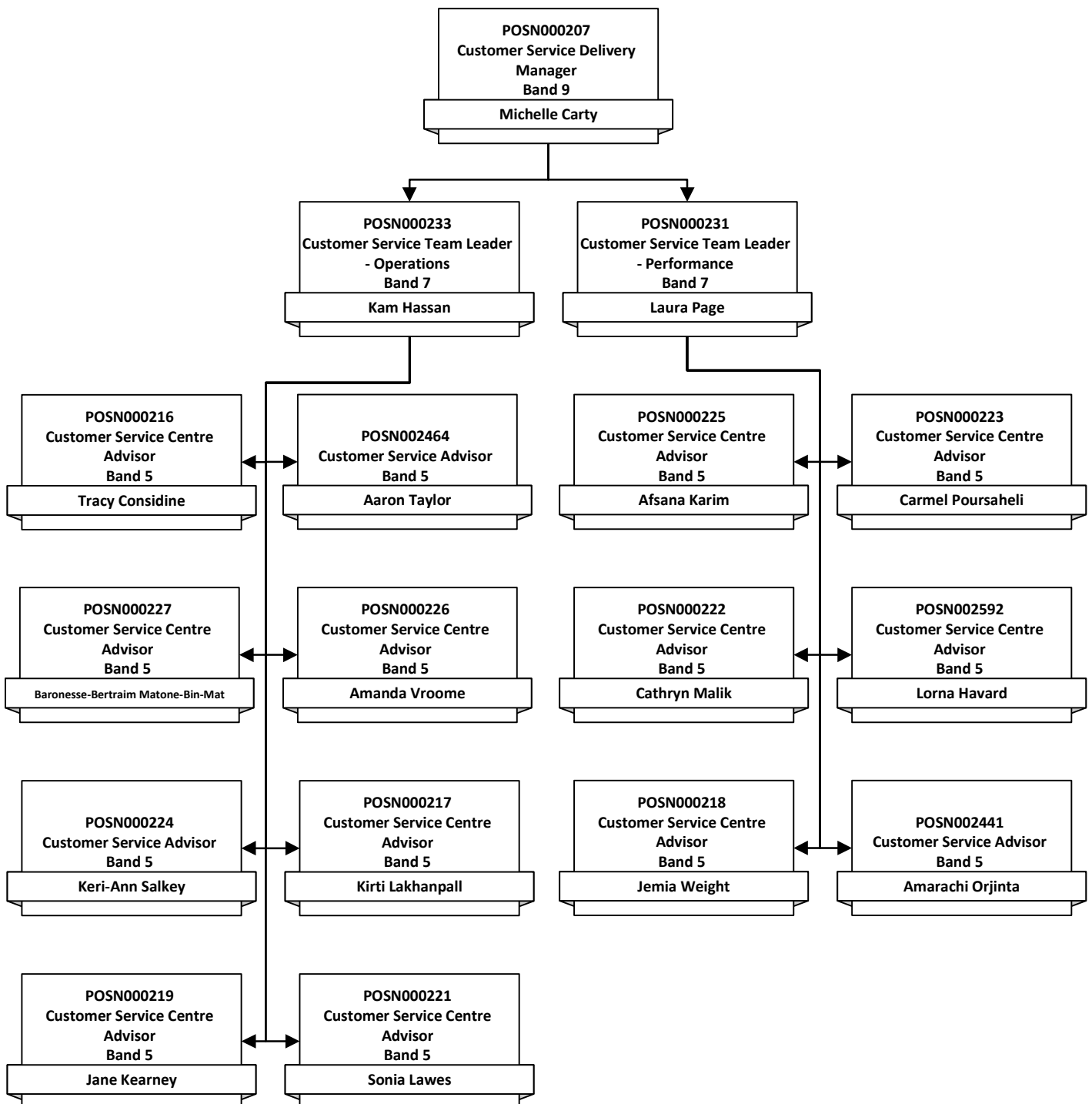
# Customer Experience



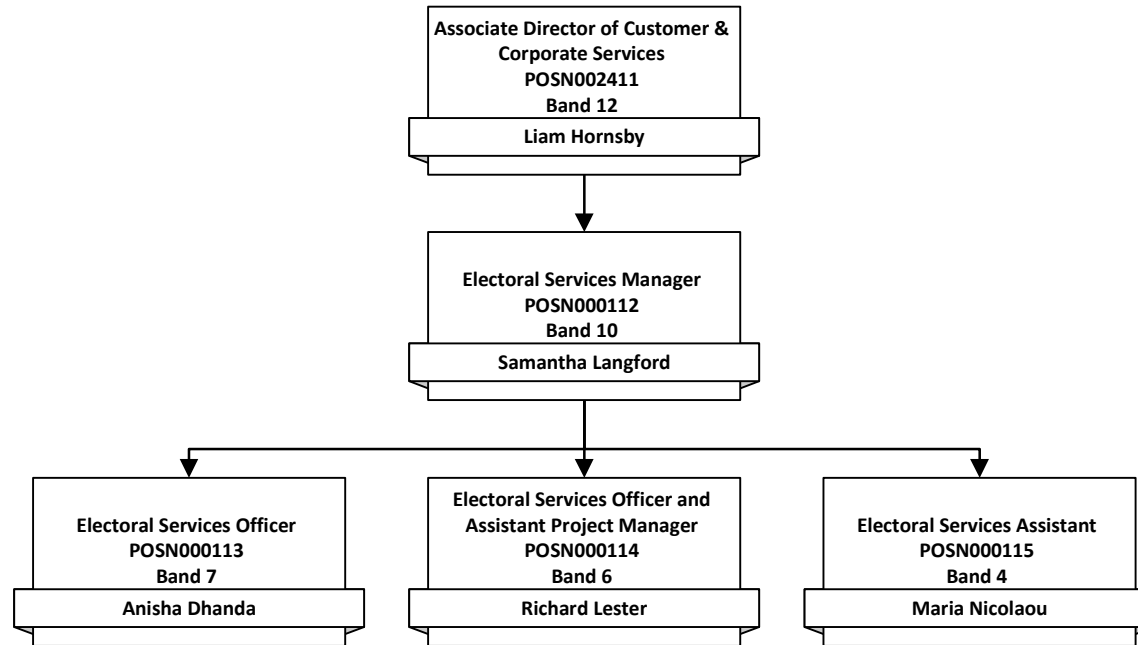
# Executive Support & Communications



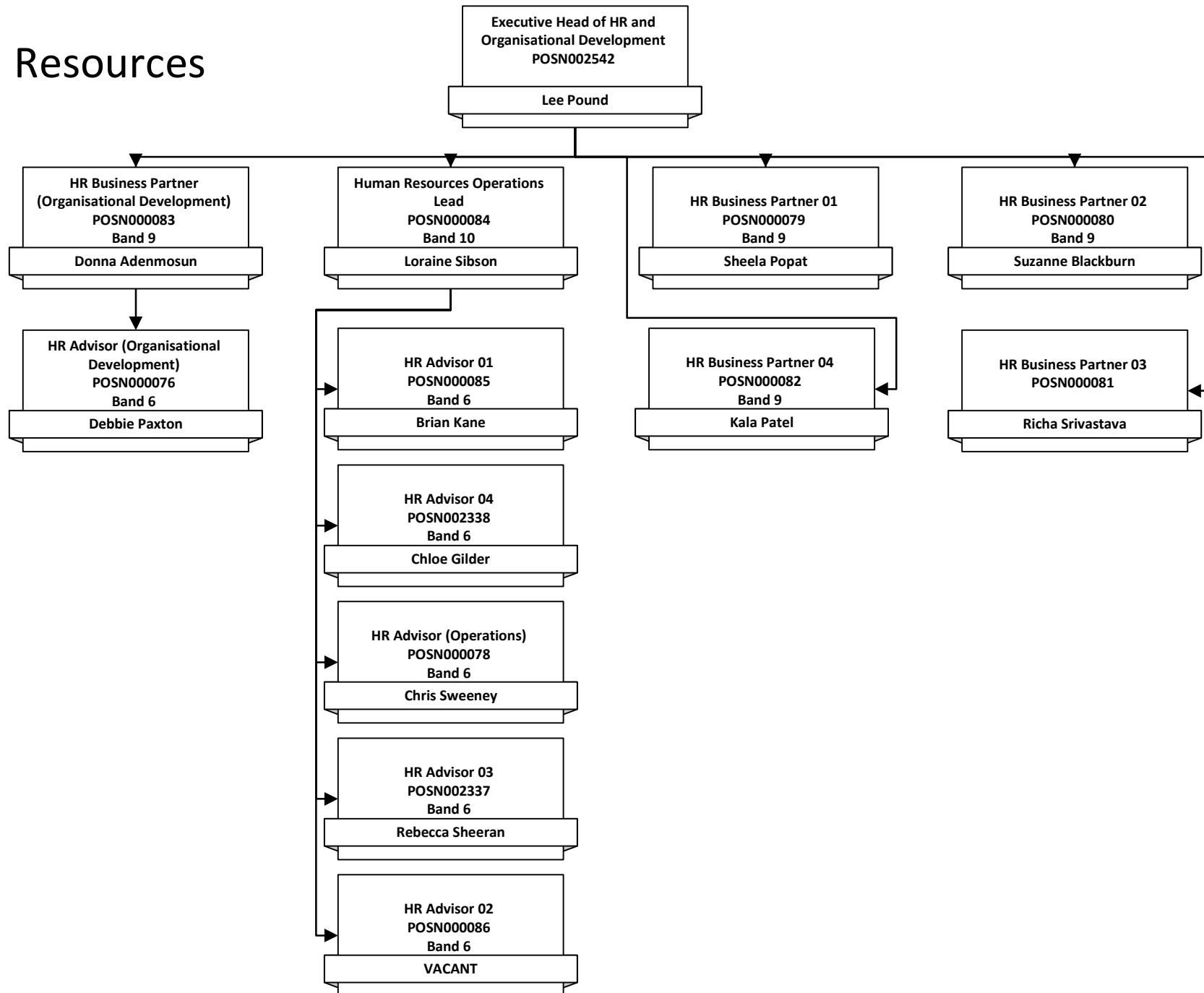
# Customer Service



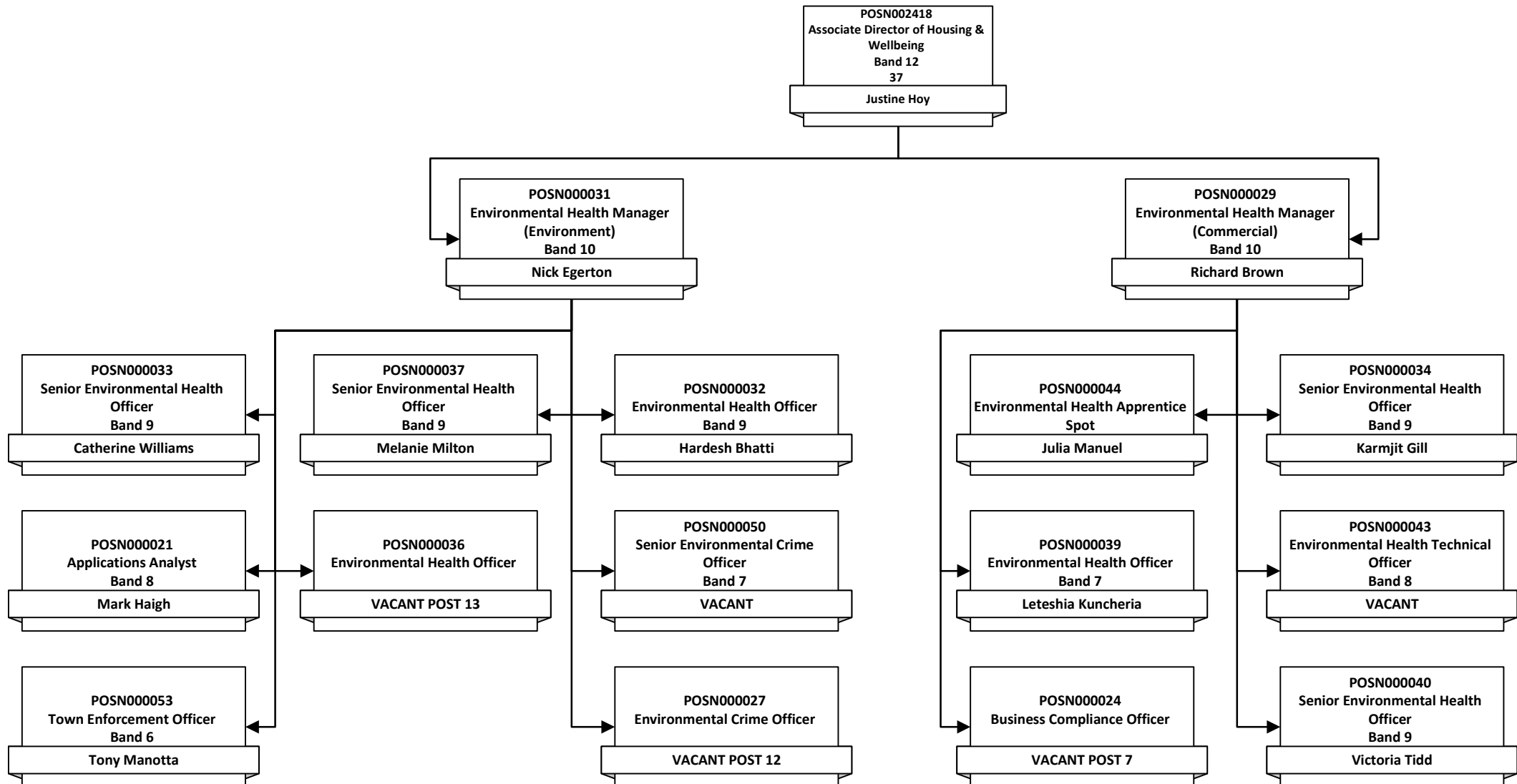
# Elections



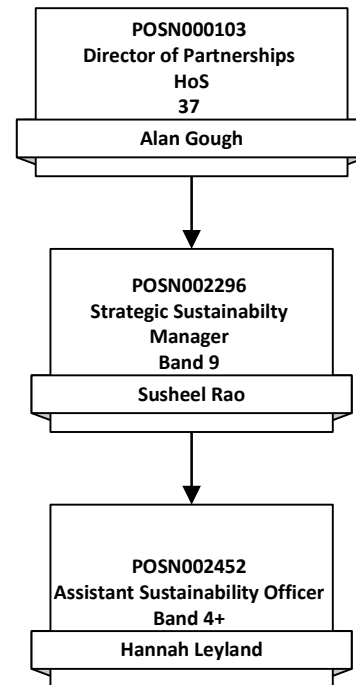
# Human Resources



# Environmental Health (Commercial & Environment)

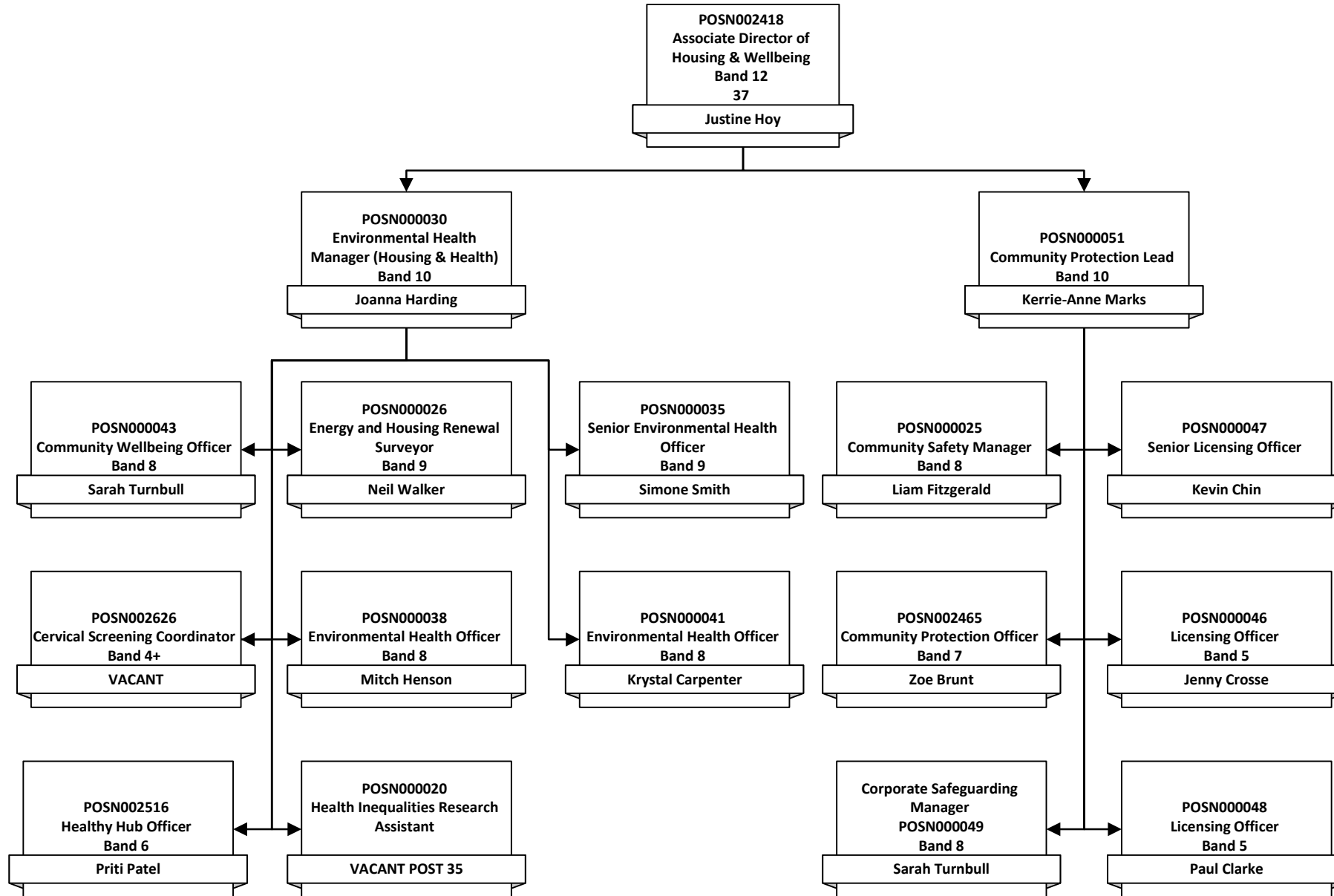


# Sustainability

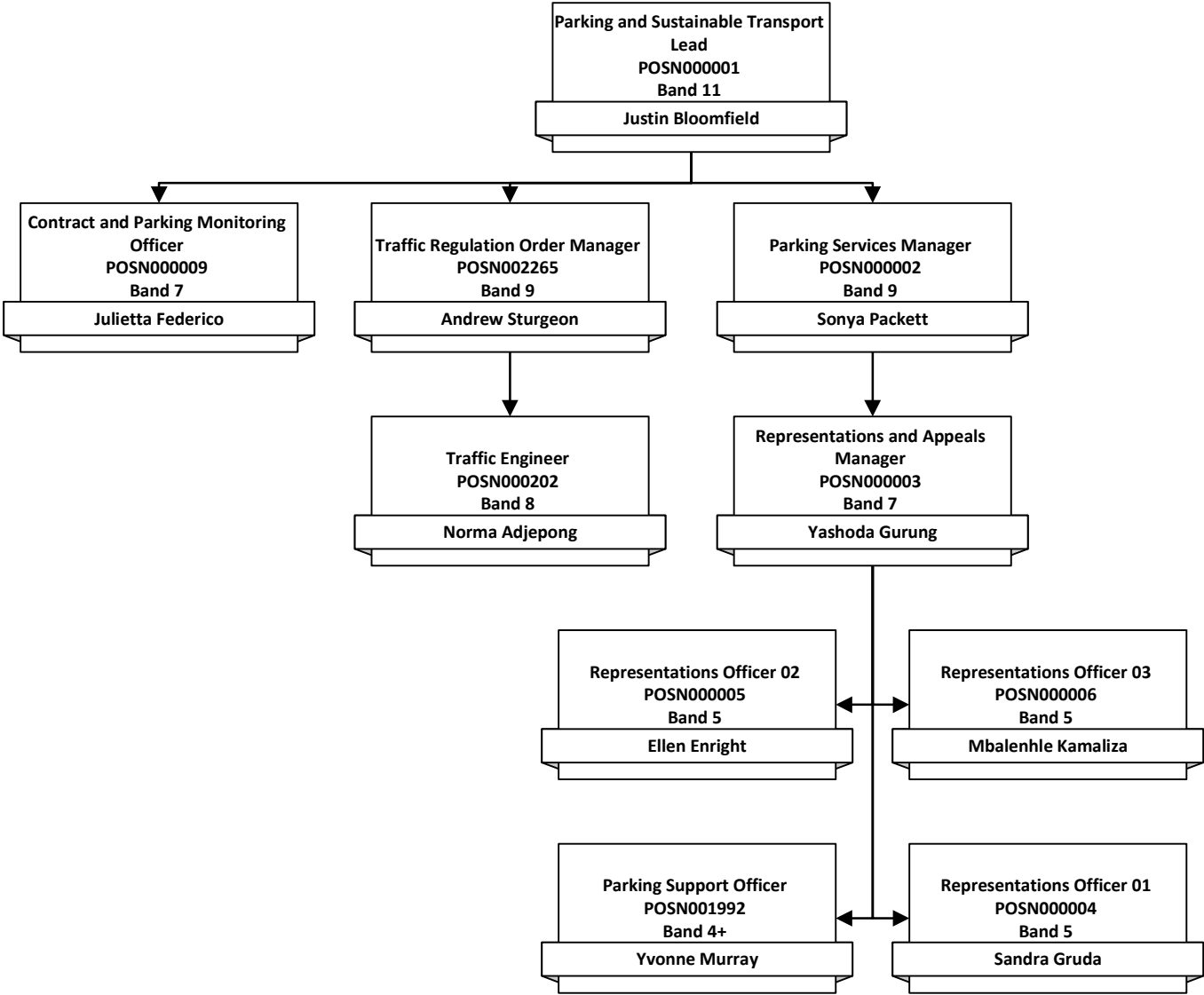




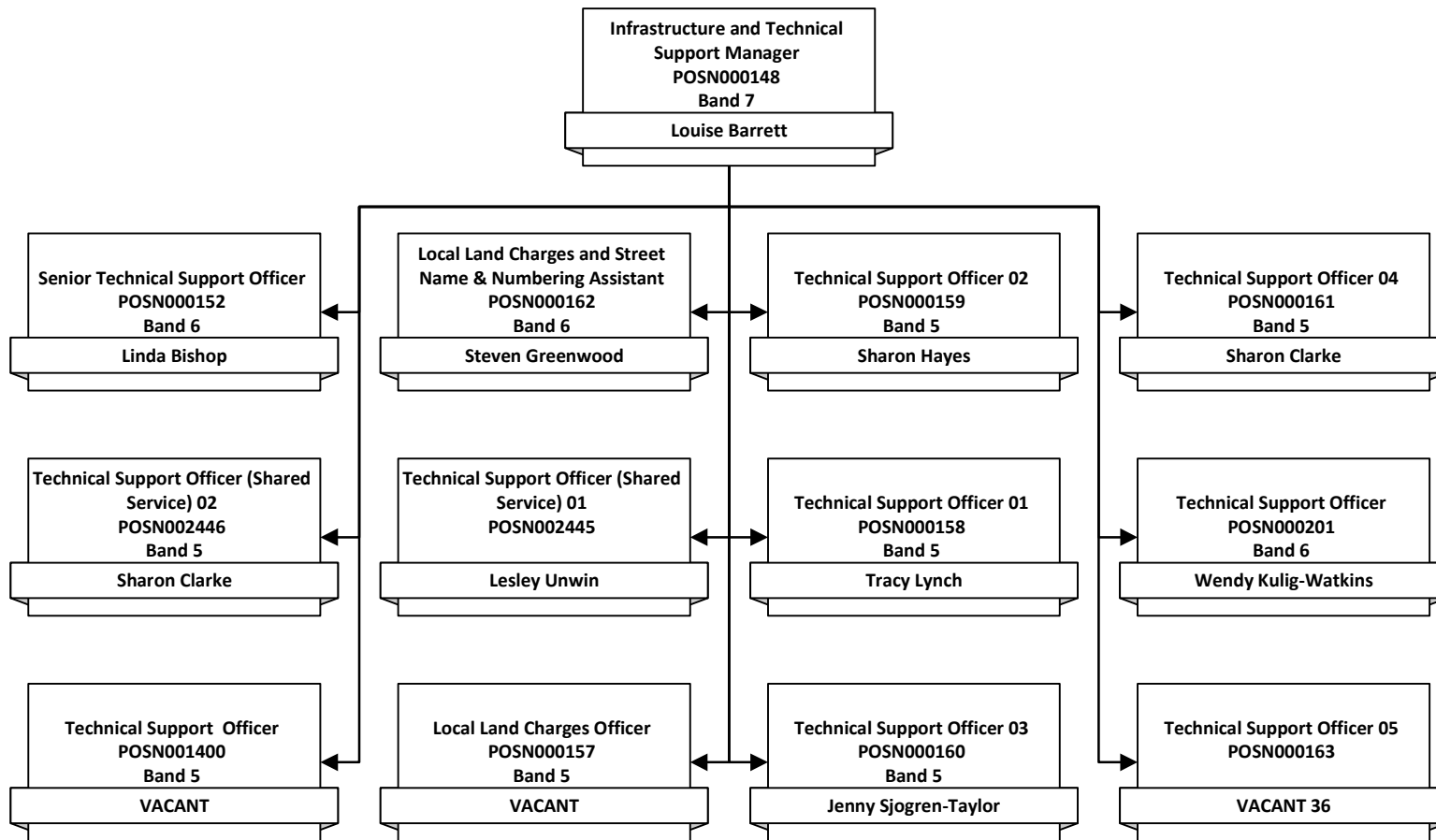
# Environmental Health (Housing & Health & Community Protection)



# Parking & Sustainable Transport



# Technical Support



# Community Commissioning



# Housing & Wellbeing

