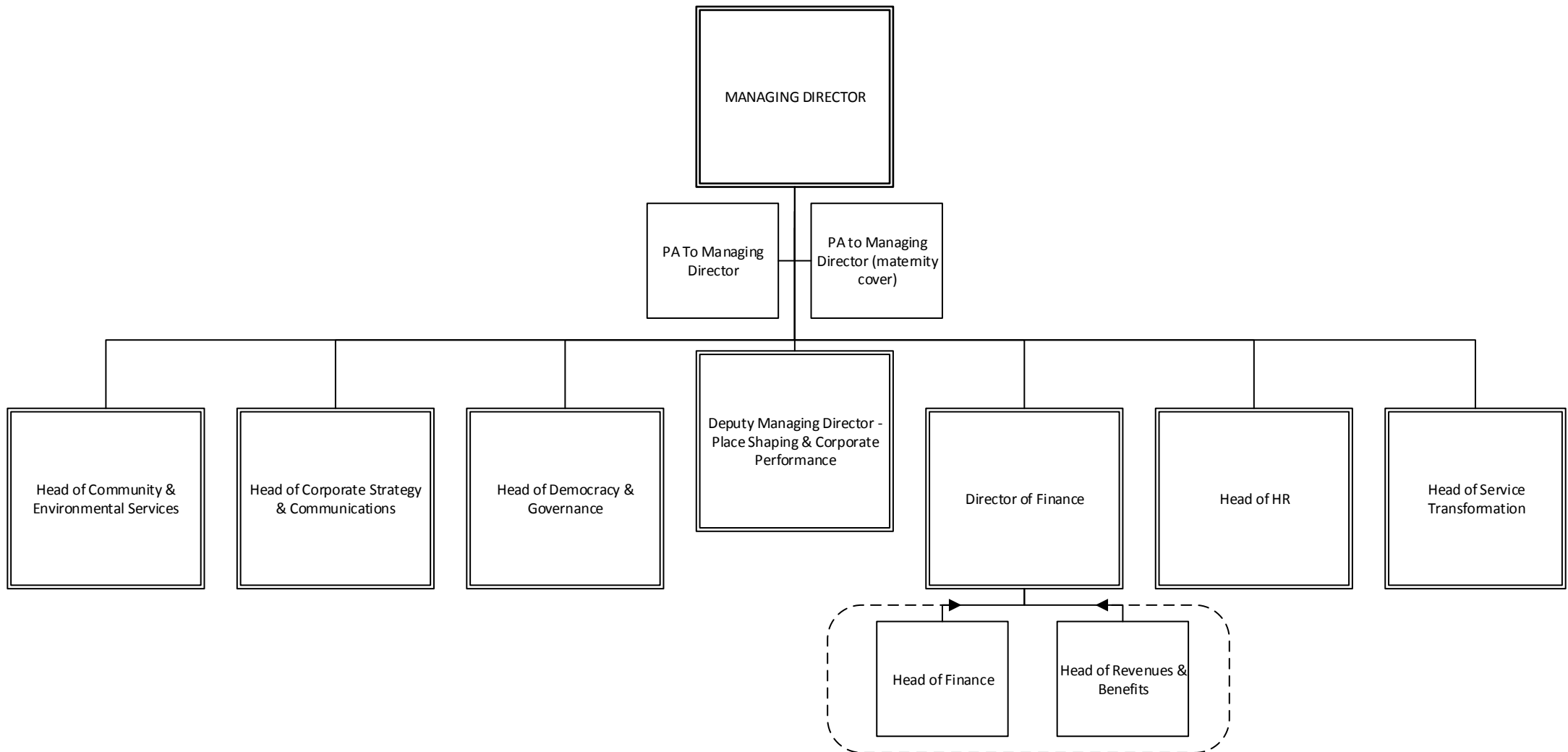
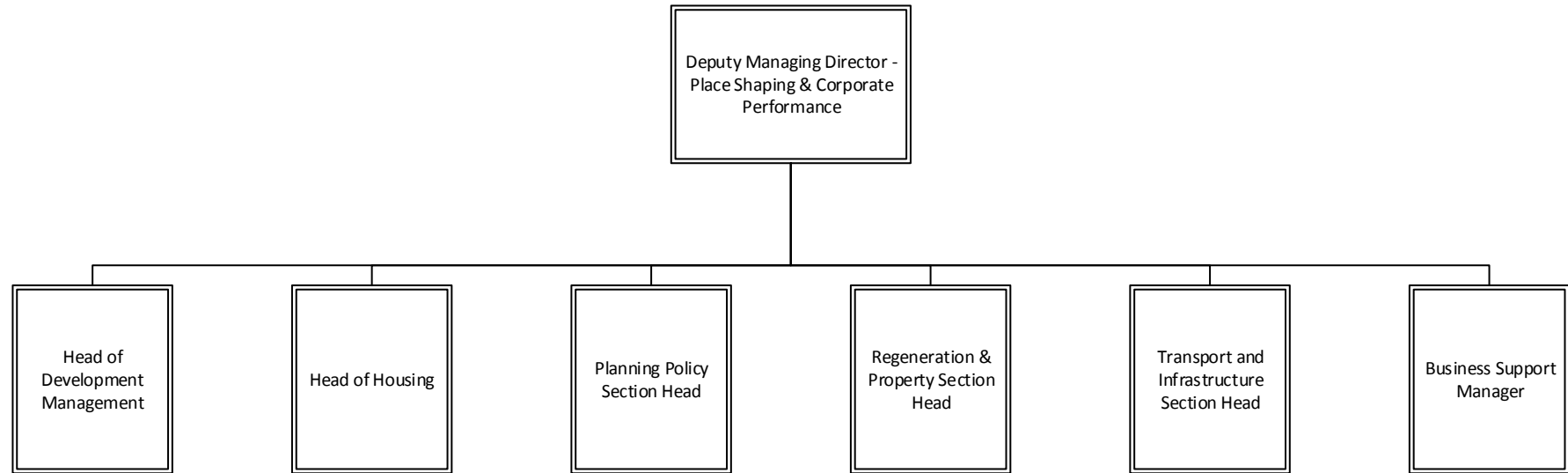


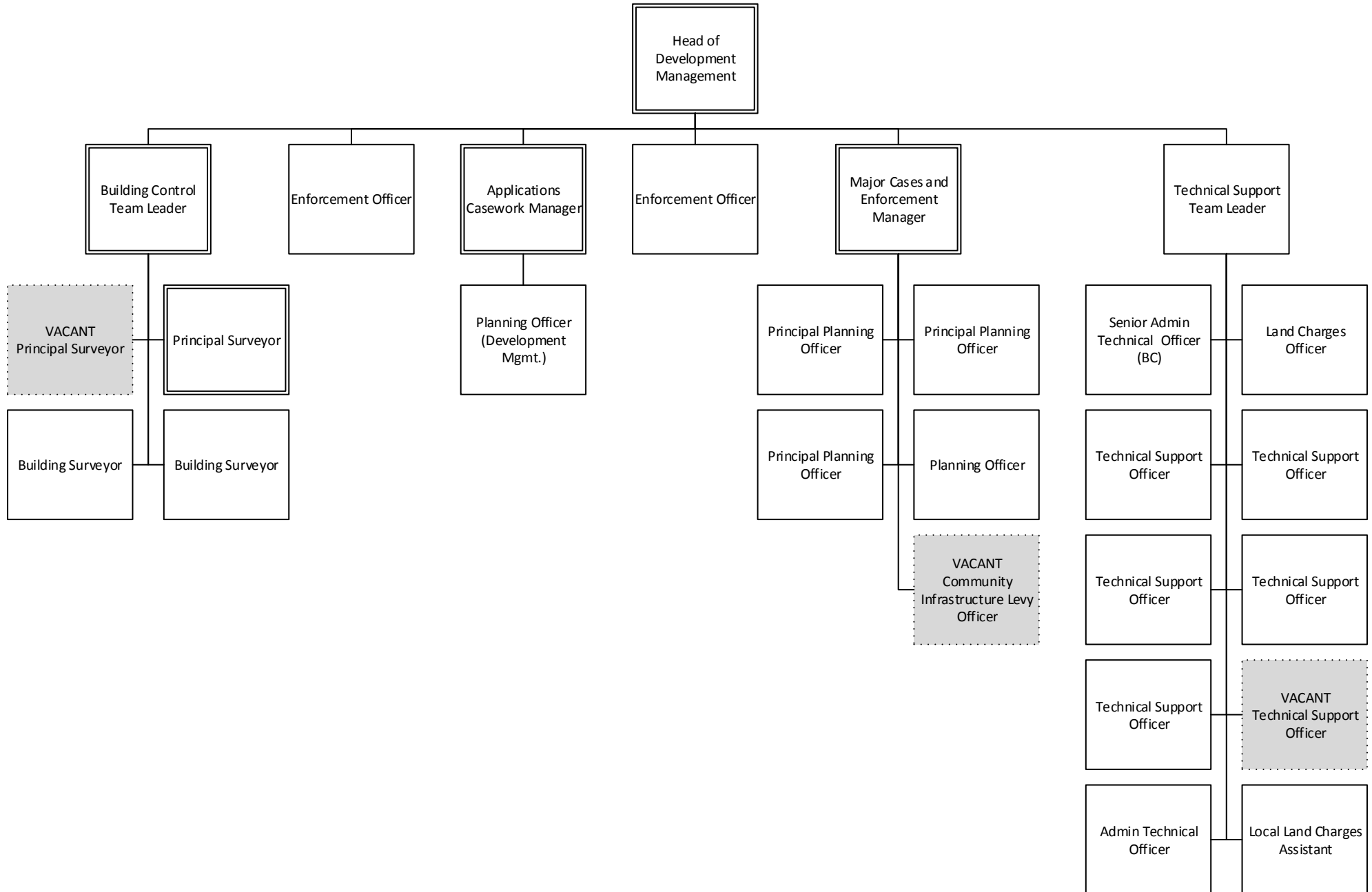
# WATFORD BOROUGH COUNCIL: LEADERSHIP TEAM



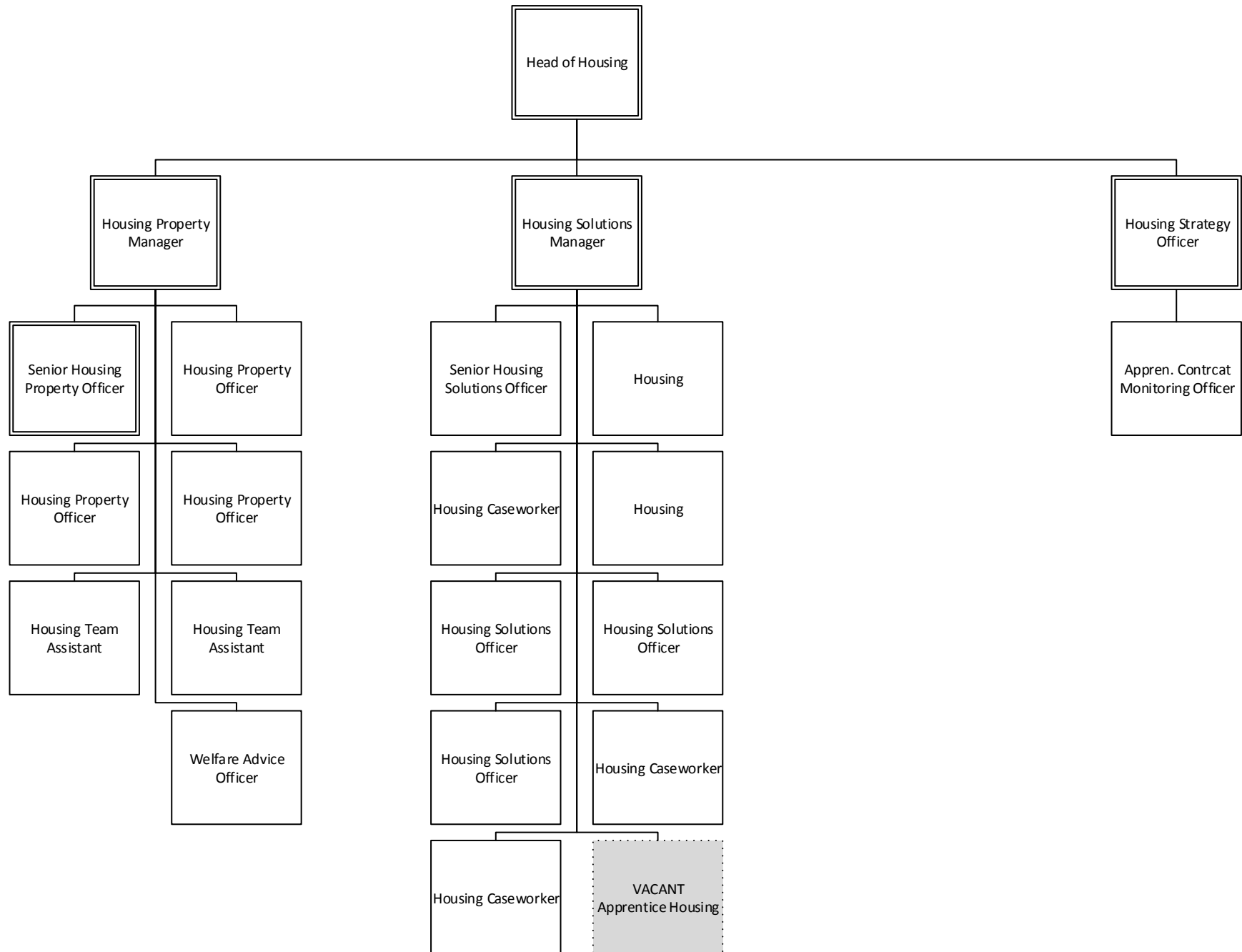
## PLACE SHAPING & CORPORATE PERFORMANCE - OVERVIEW



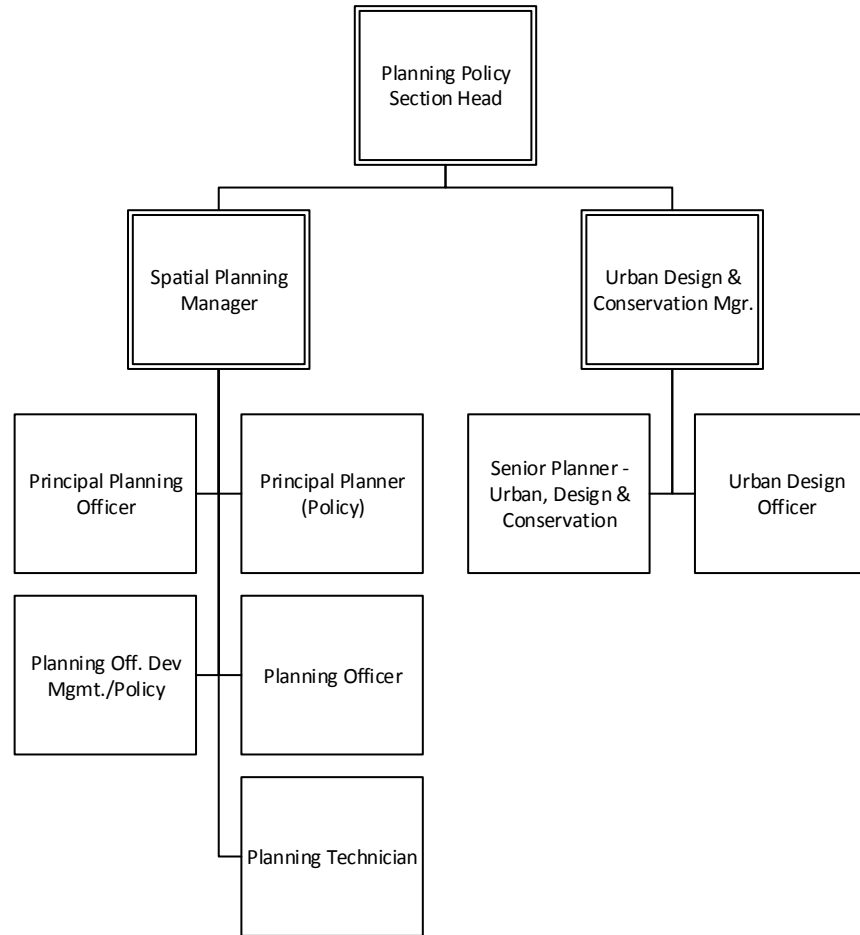
# PLACE SHAPING & CORPORATE PERFORMANCE: DEVELOPMENT MANAGEMENT



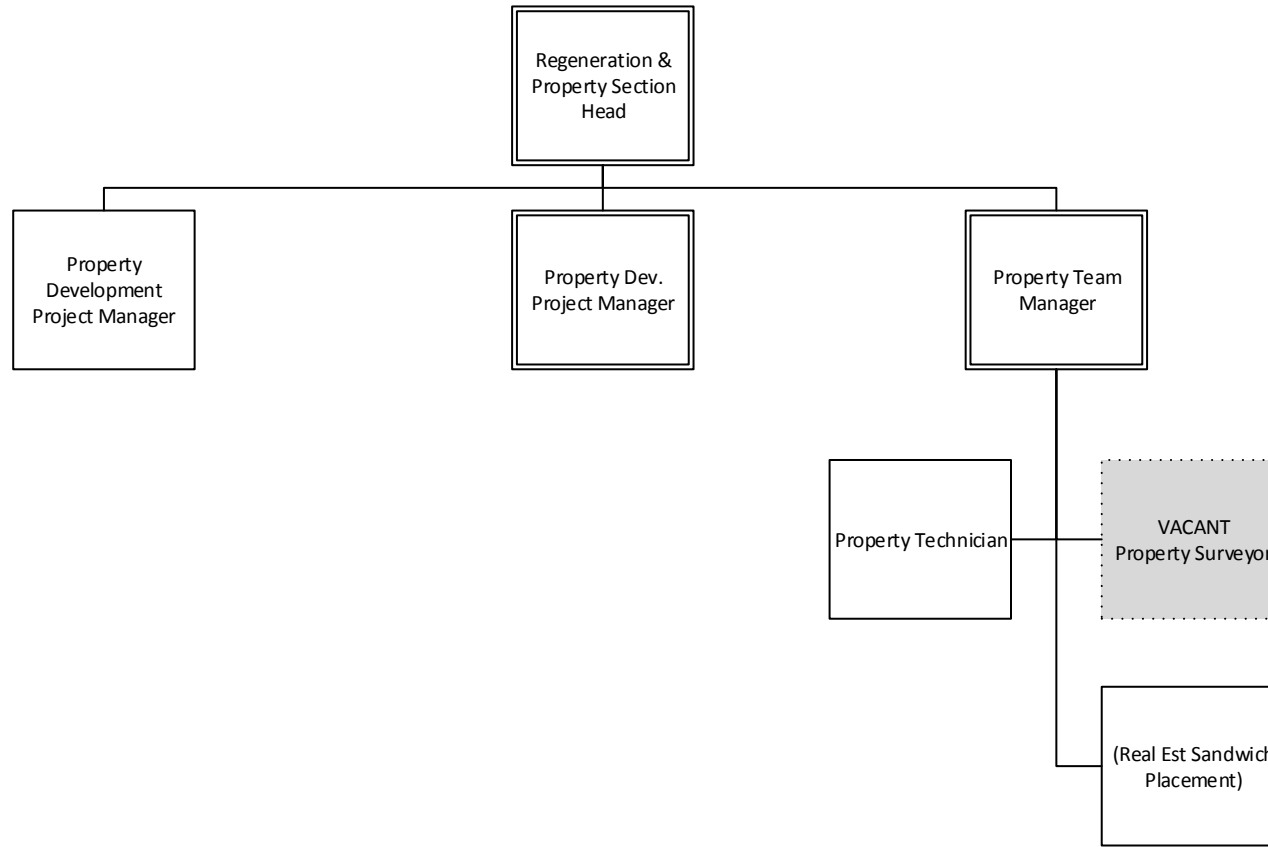
# PLACE SHAPING & CORPORATE PERFORMANCE: HOUSING



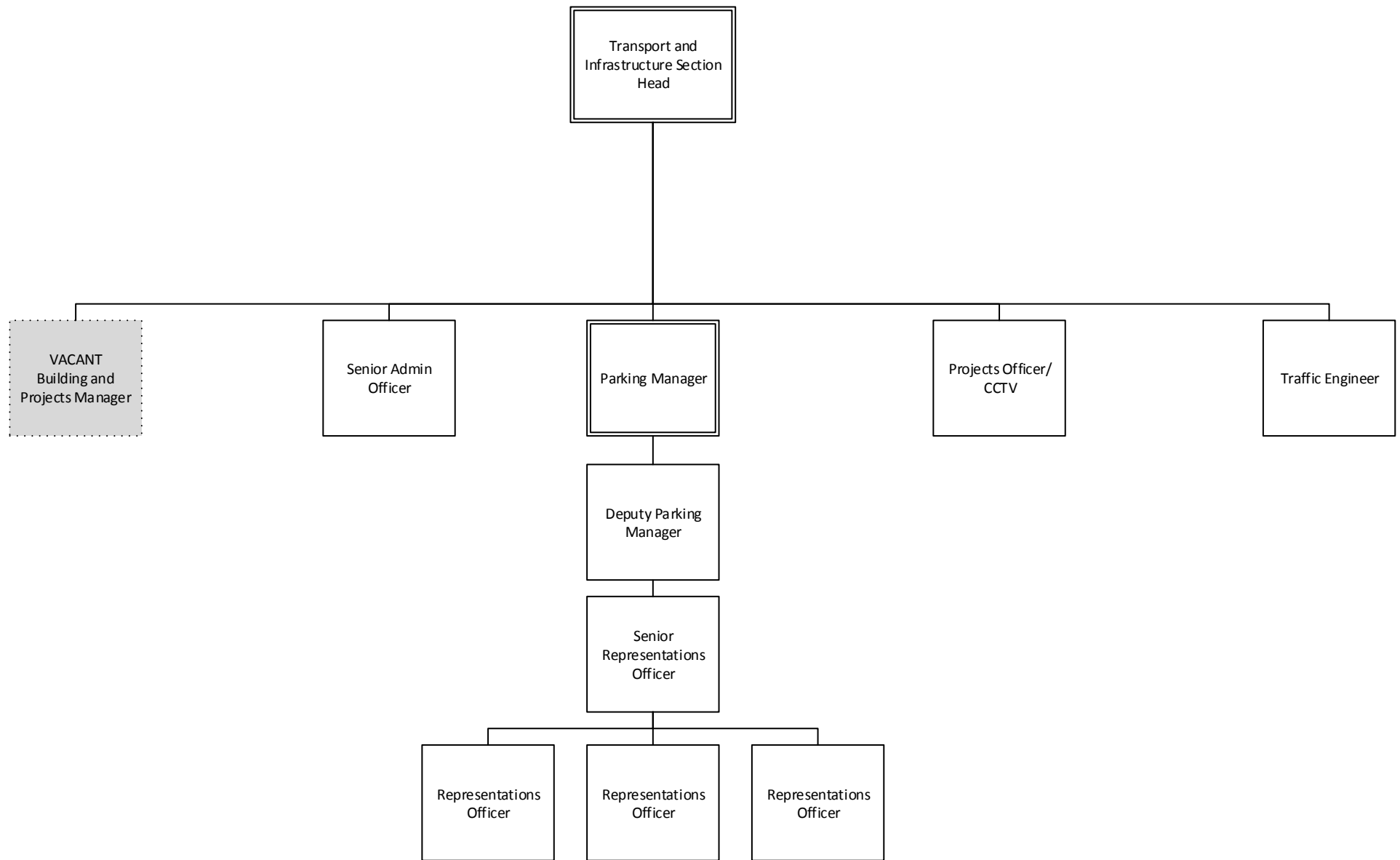
# PLACE SHAPING & CORPORATE PERFORMANCE: PLANNING POLICY



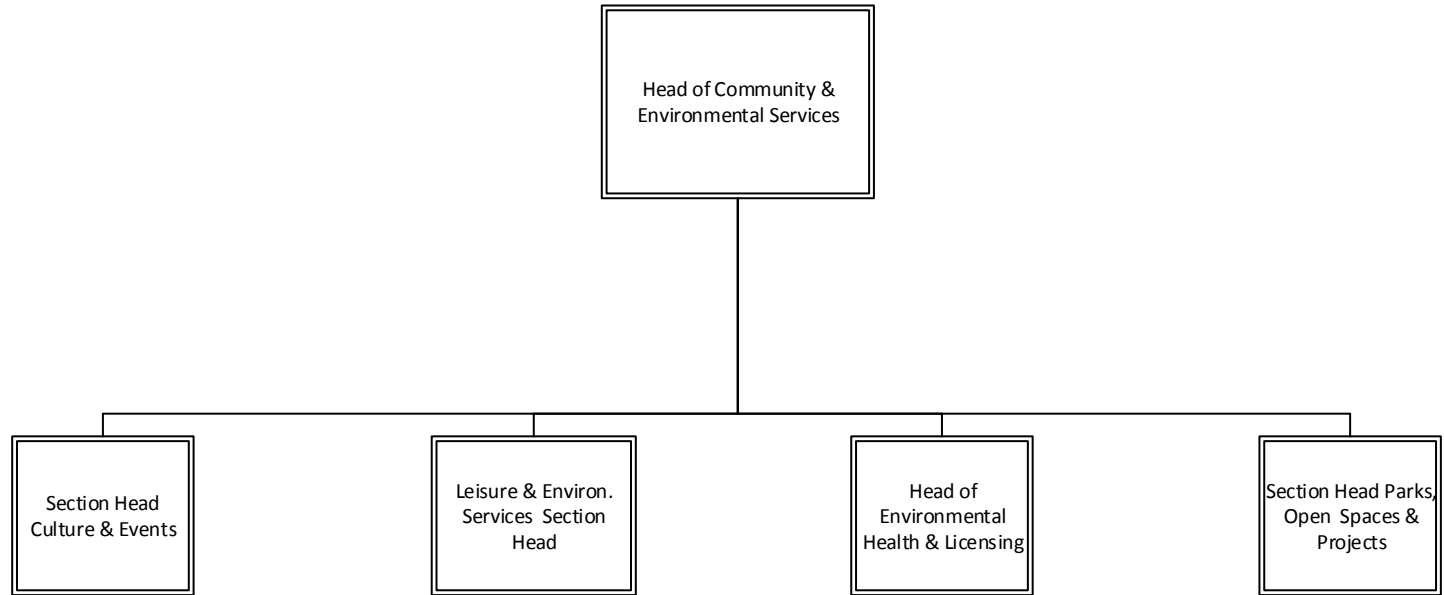
# PLACE SHAPING & CORPORATE PERFORMANCE: REGENERATION & PROPERTY



# PLACE SHAPING & CORPORATE PERFORMANCE: TRANSPORT & INFRASTRUCTURE

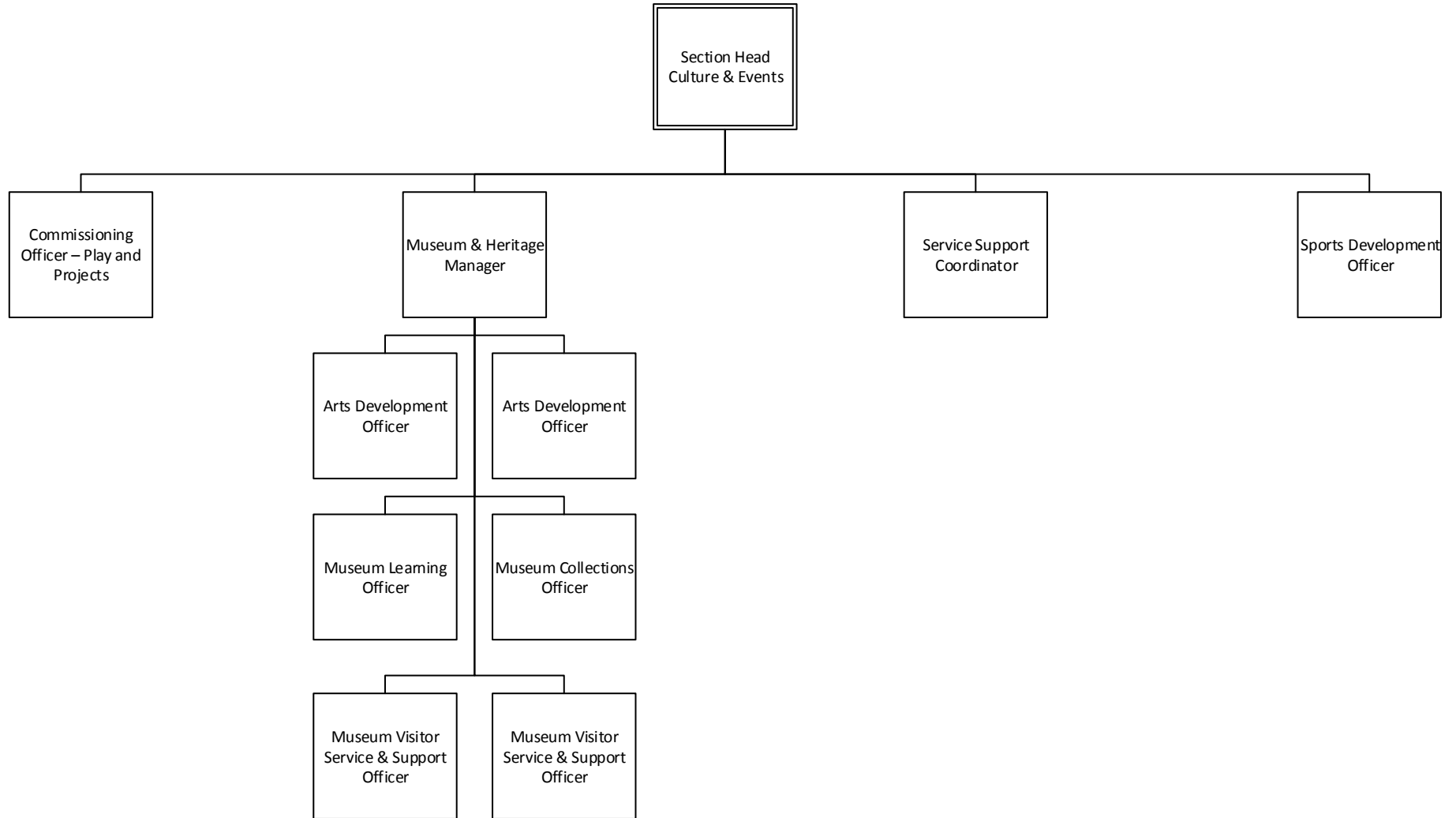


# COMMUNITY & ENVIRONMENTAL SERVICES: OVERVIEW

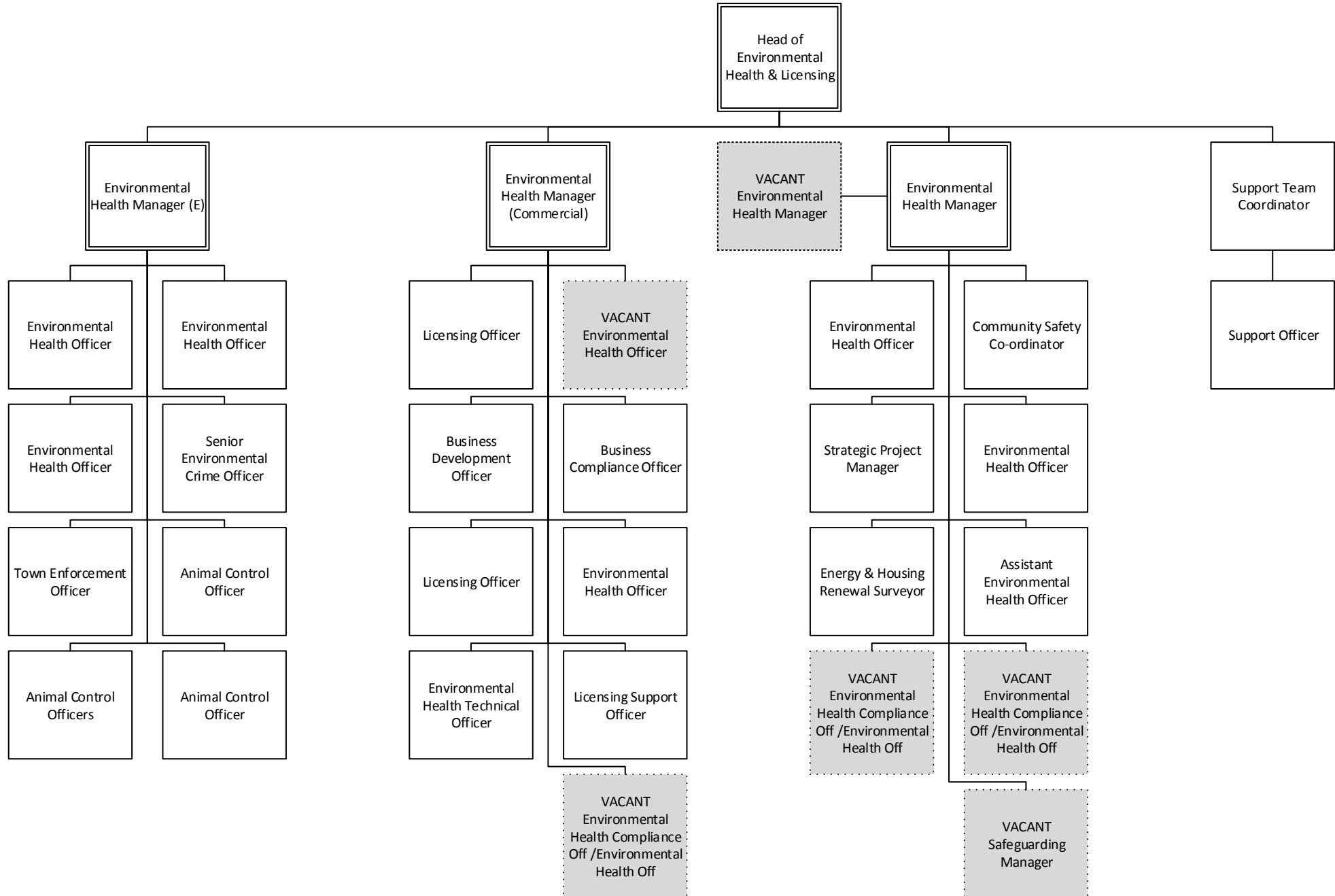




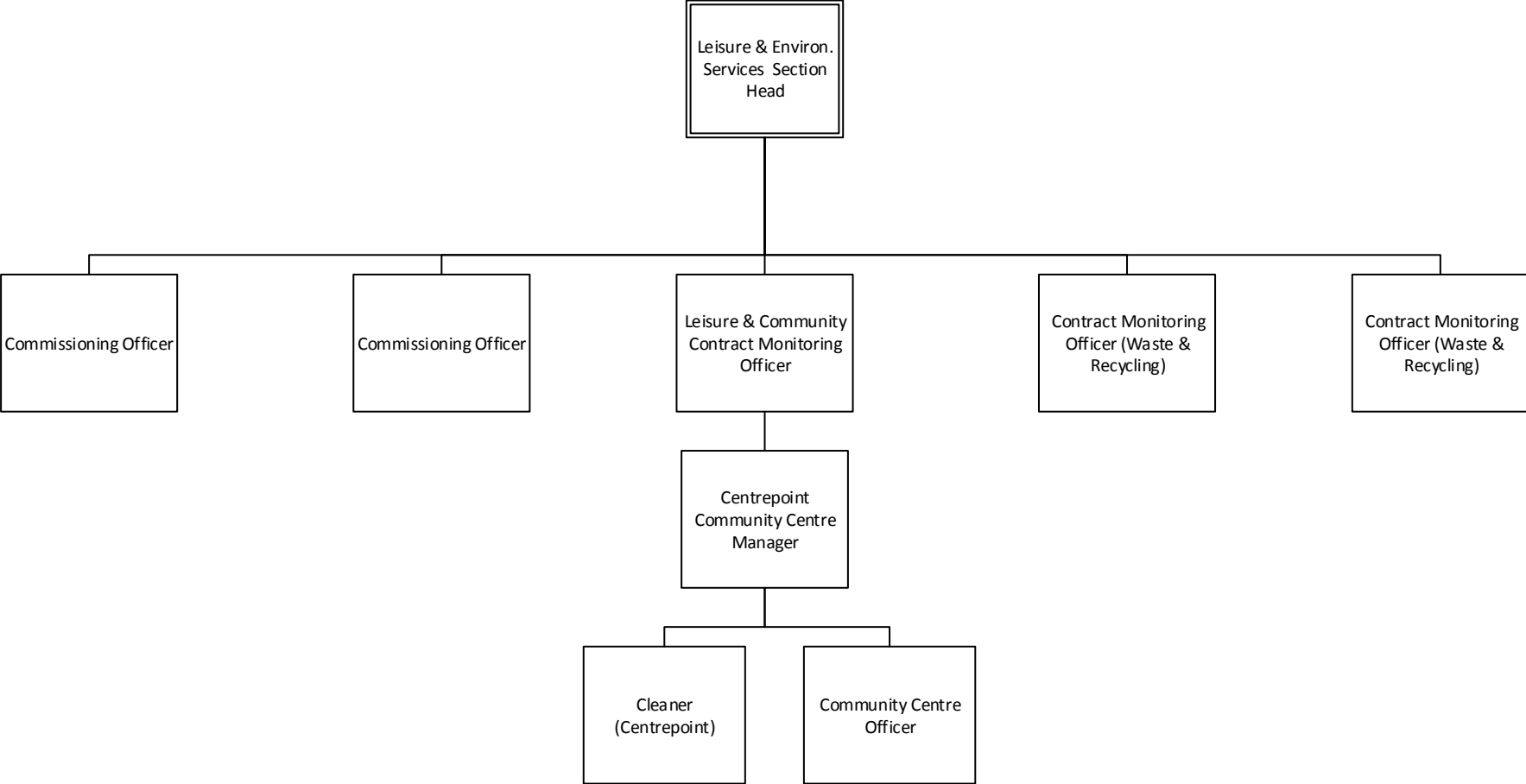
# COMMUNITY & ENVIRONMENTAL SERVICES: CULTURE & PLAY



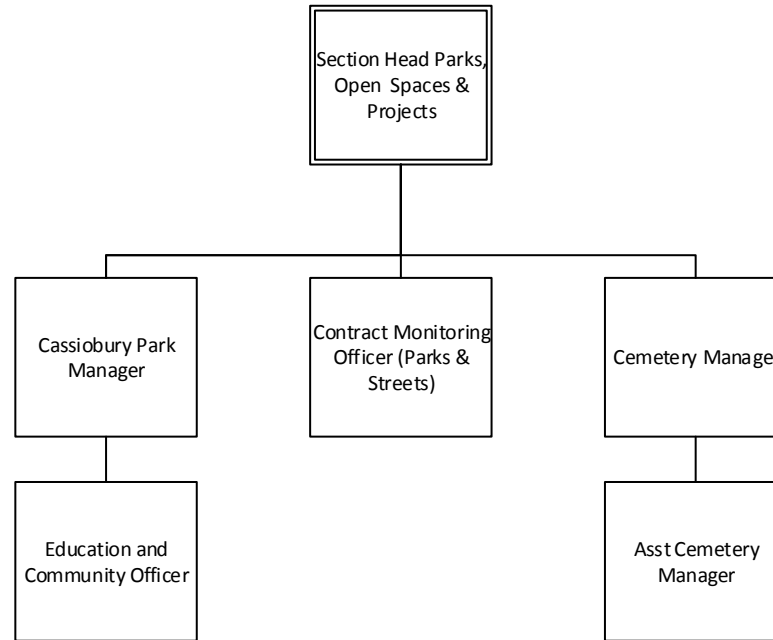
# COMMUNITY & ENVIRONMENTAL SERVICES: ENVIRONMENTAL HEALTH & LICENSING



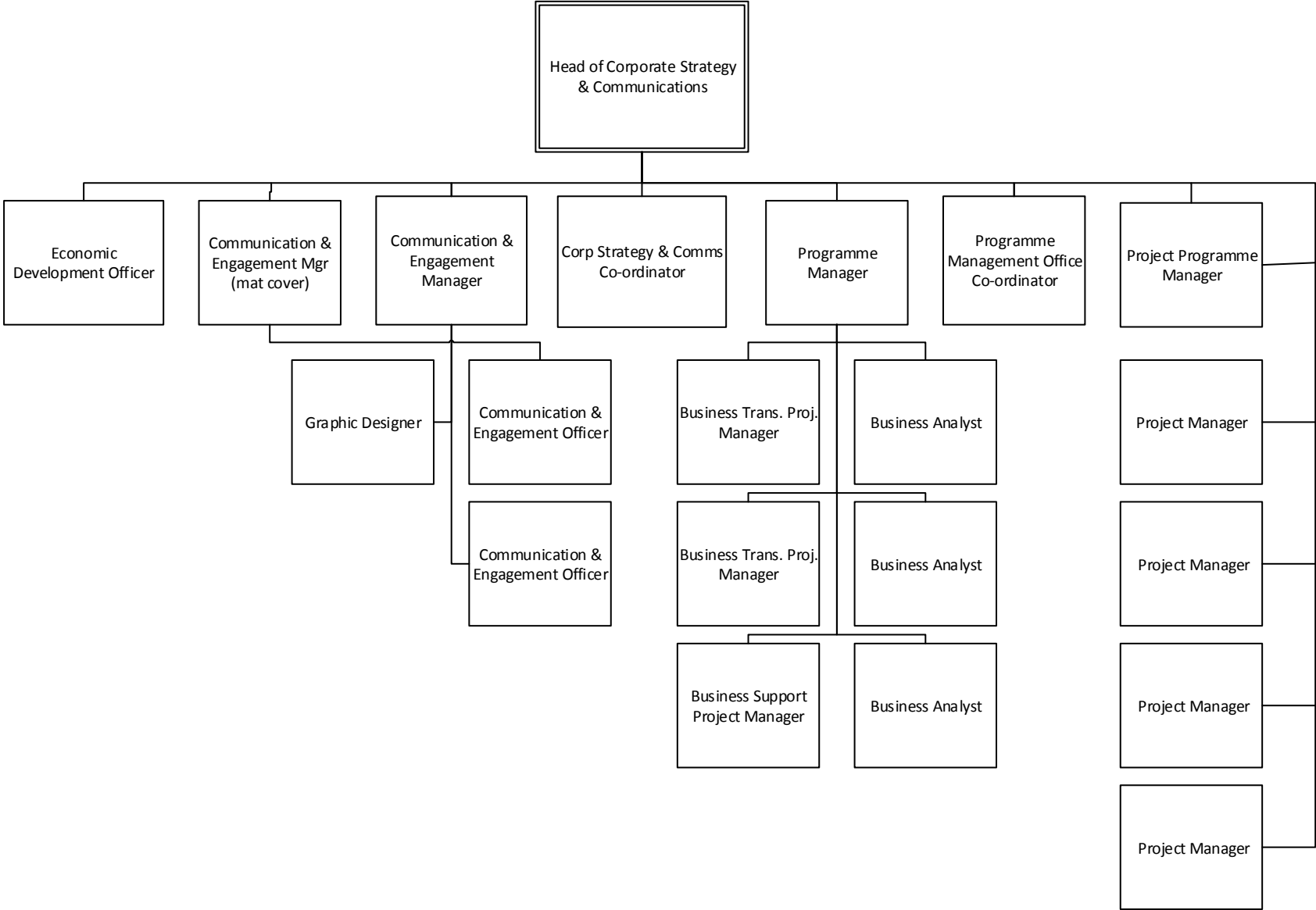
**COMMUNITY & ENVIRONMENTAL SERVICES: LEISURE & COMMUNITY**



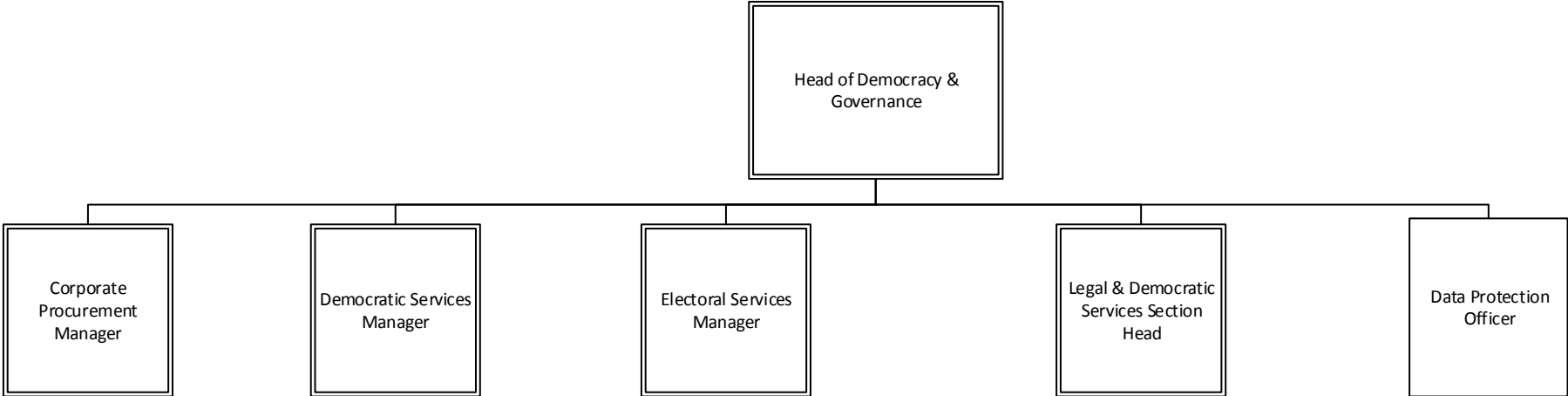
## COMMUNITY & ENVIRONMENTAL SERVICES: PARKS, OPENS SPACES & PROJECTS



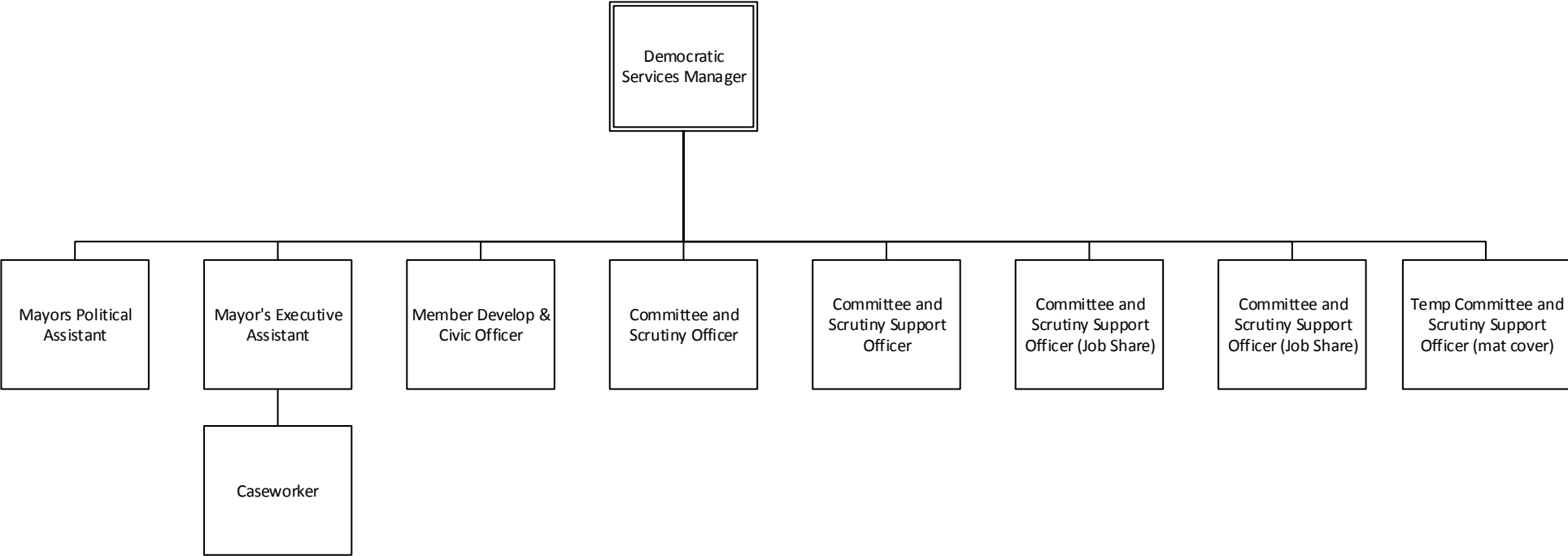
# CORPORATE STRATEGY & COMMUNICATIONS



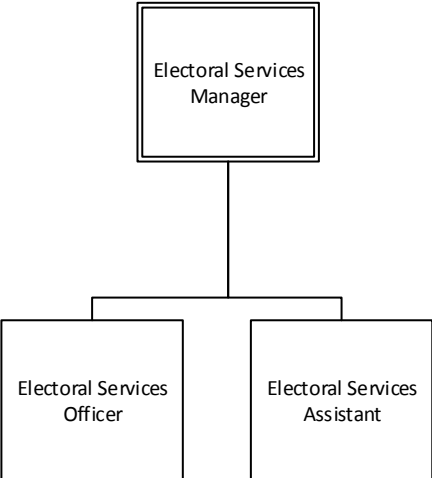
**DEMOCRACY & GOVERNANCE: OVERVIEW**



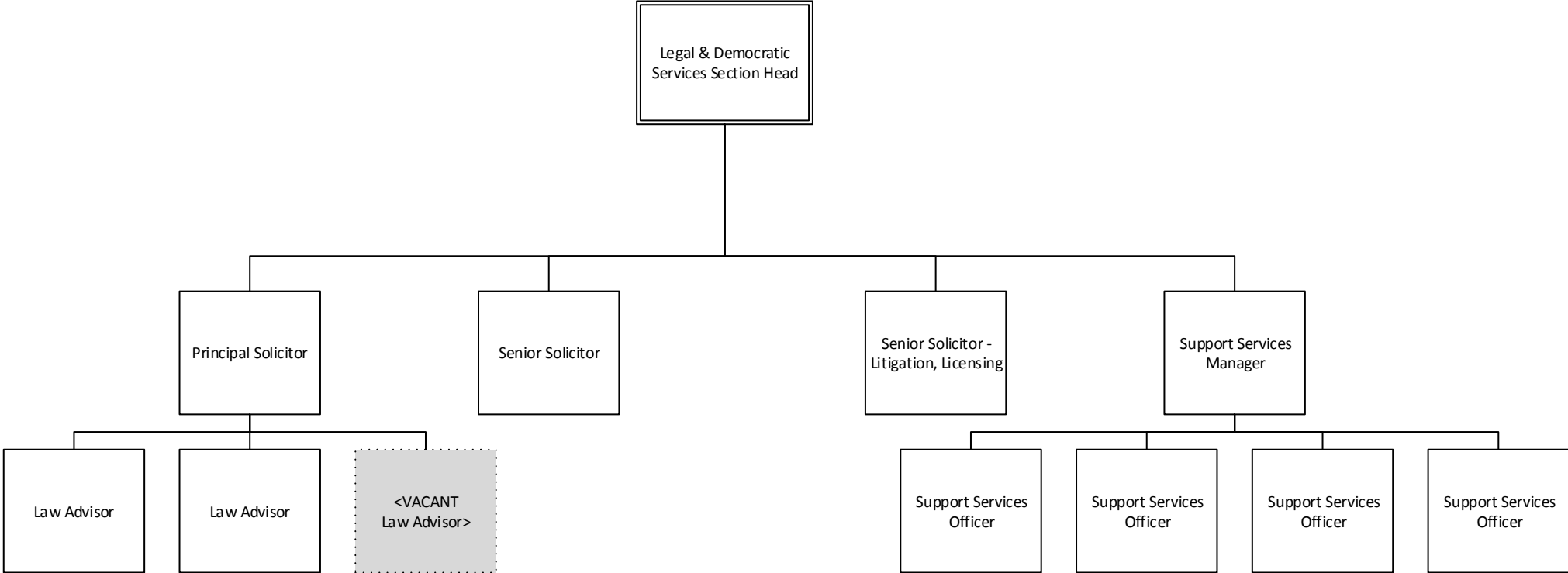
**DEMOCRACY & GOVERNANCE: DEMOCRATIC SERVICES**



**DEMOCRACY & GOVERNANCE: ELECTIONS**

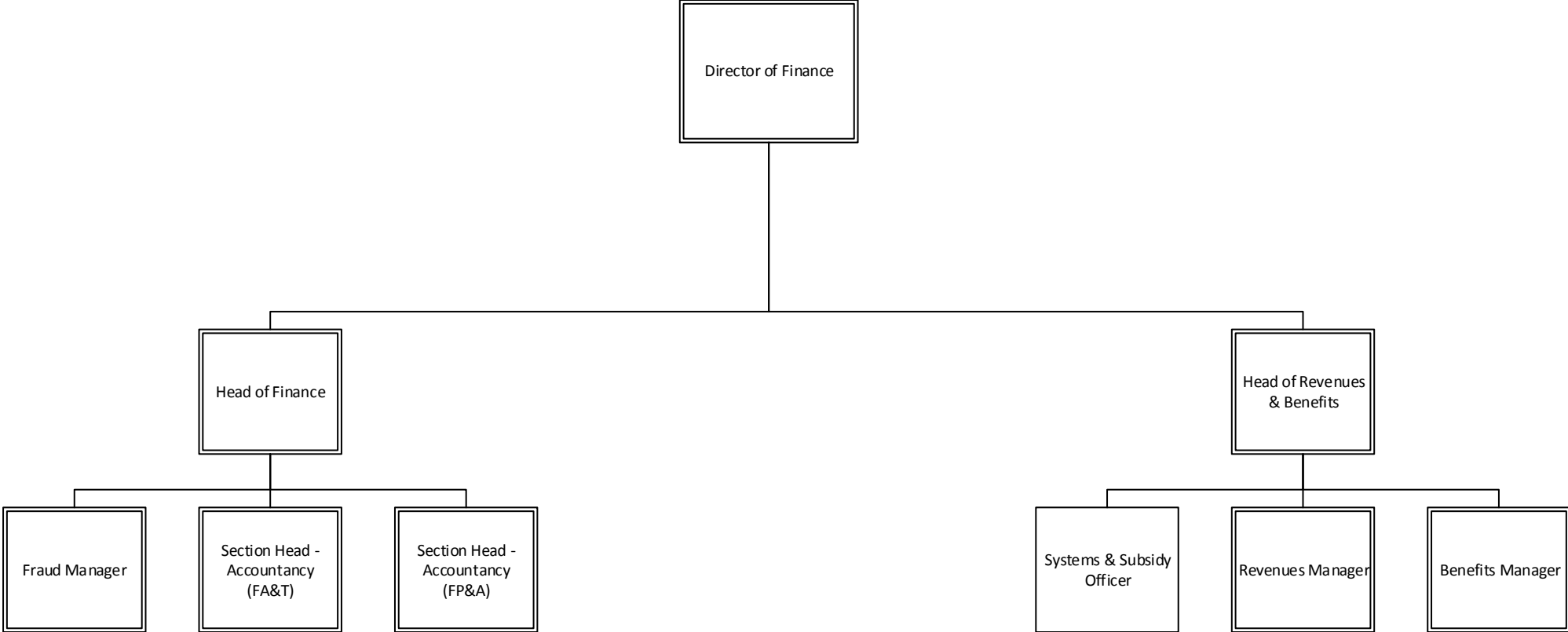


DEMOCRACY & GOVERNANCE: LEGAL & DEMOCRATIC SERVICES

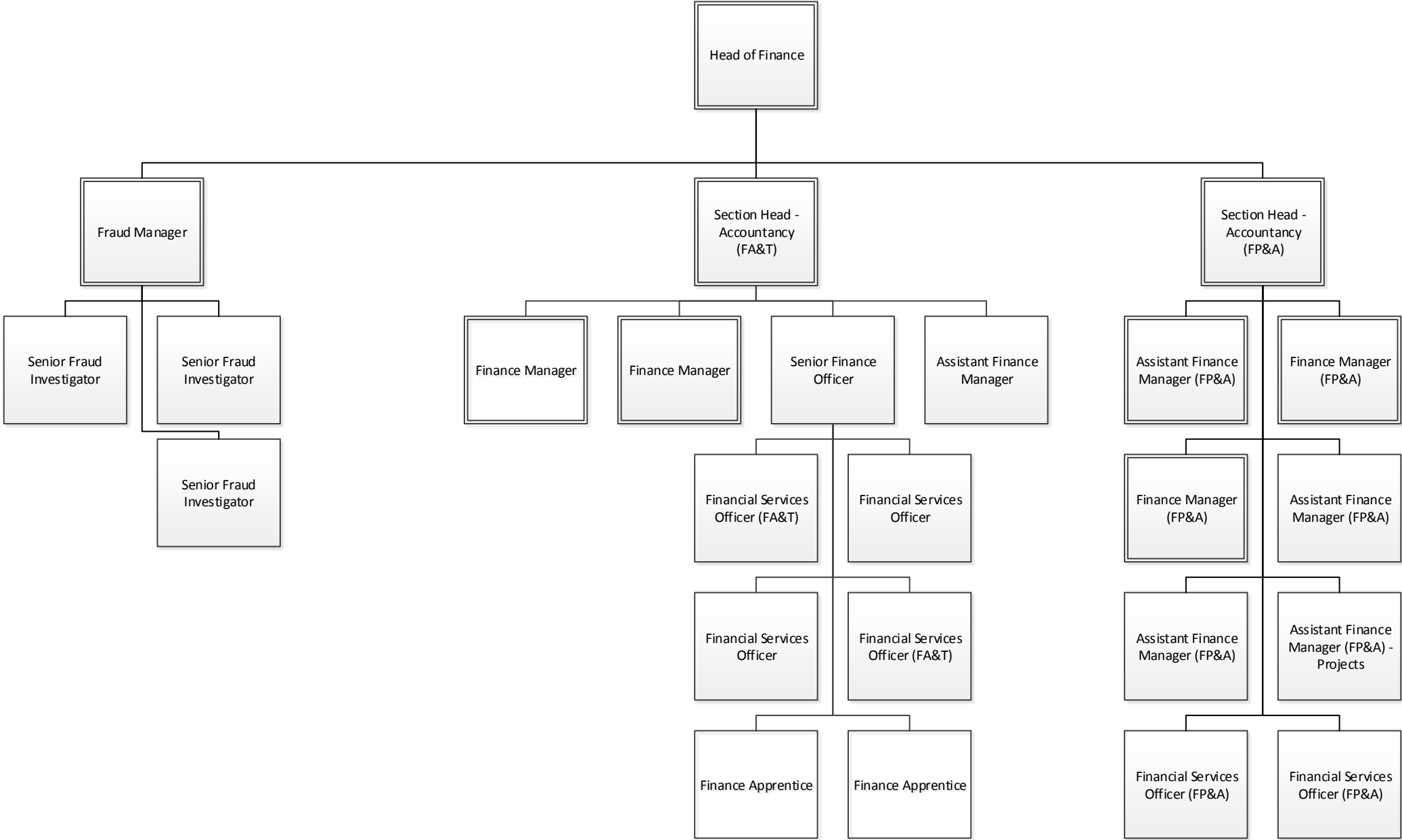




**FINANCE (LEAD AUTHORITY): OVERVIEW**

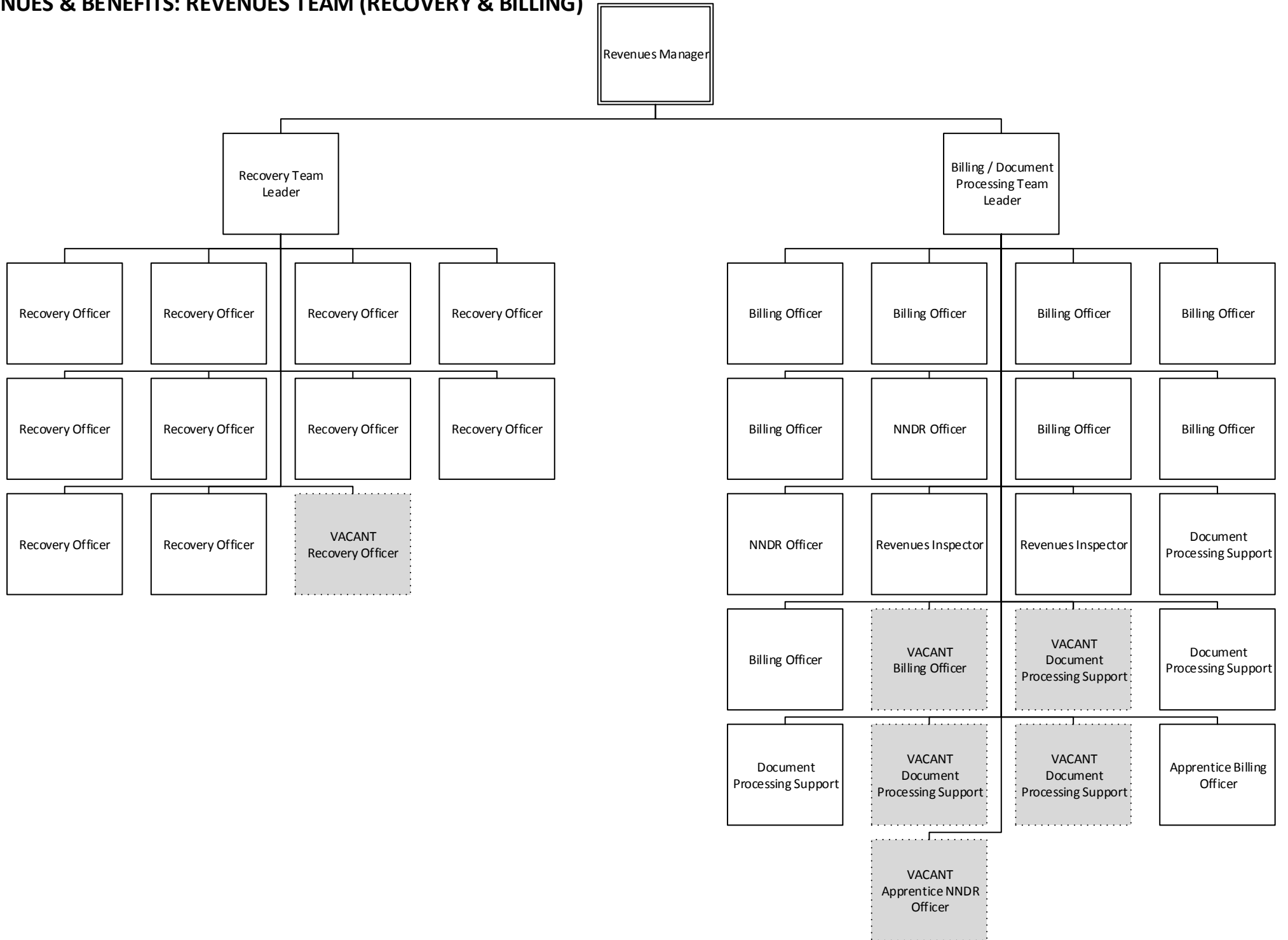


**FINANCE (LEAD AUTHORITY)**

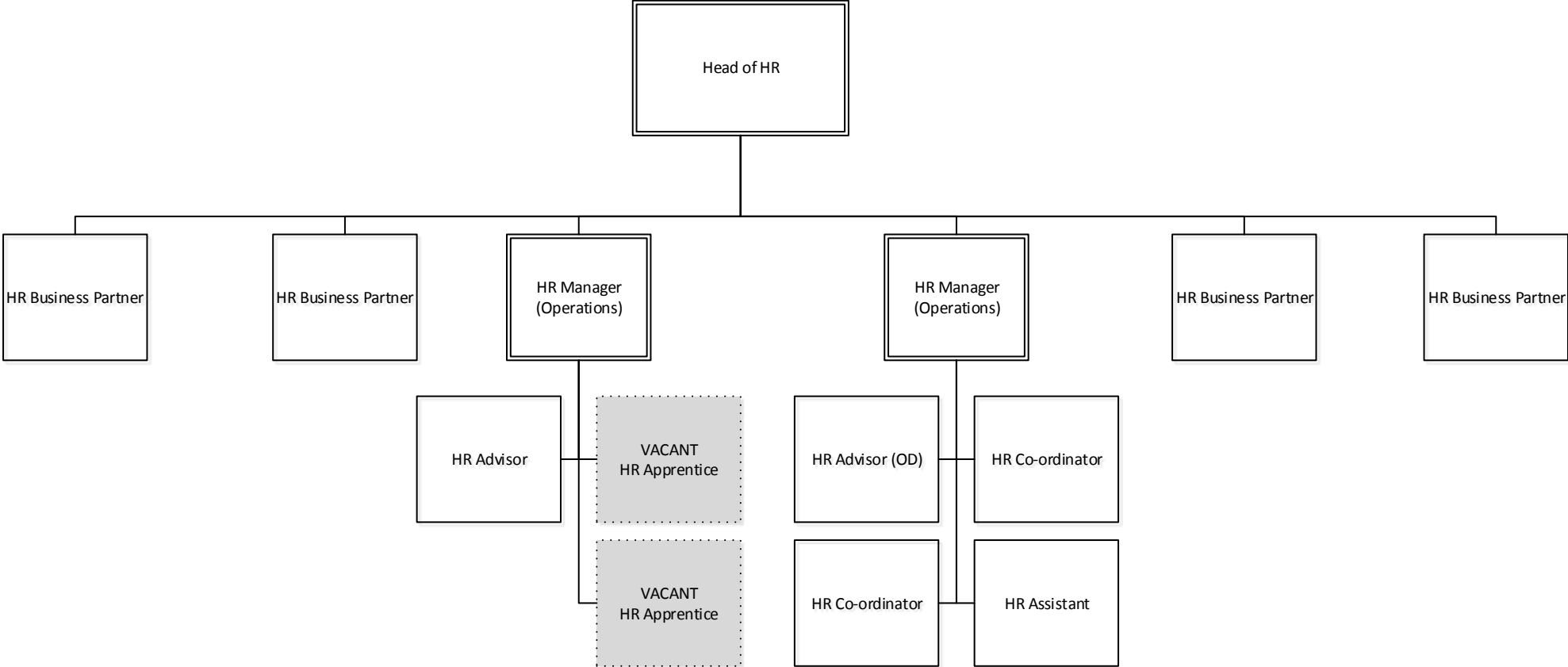




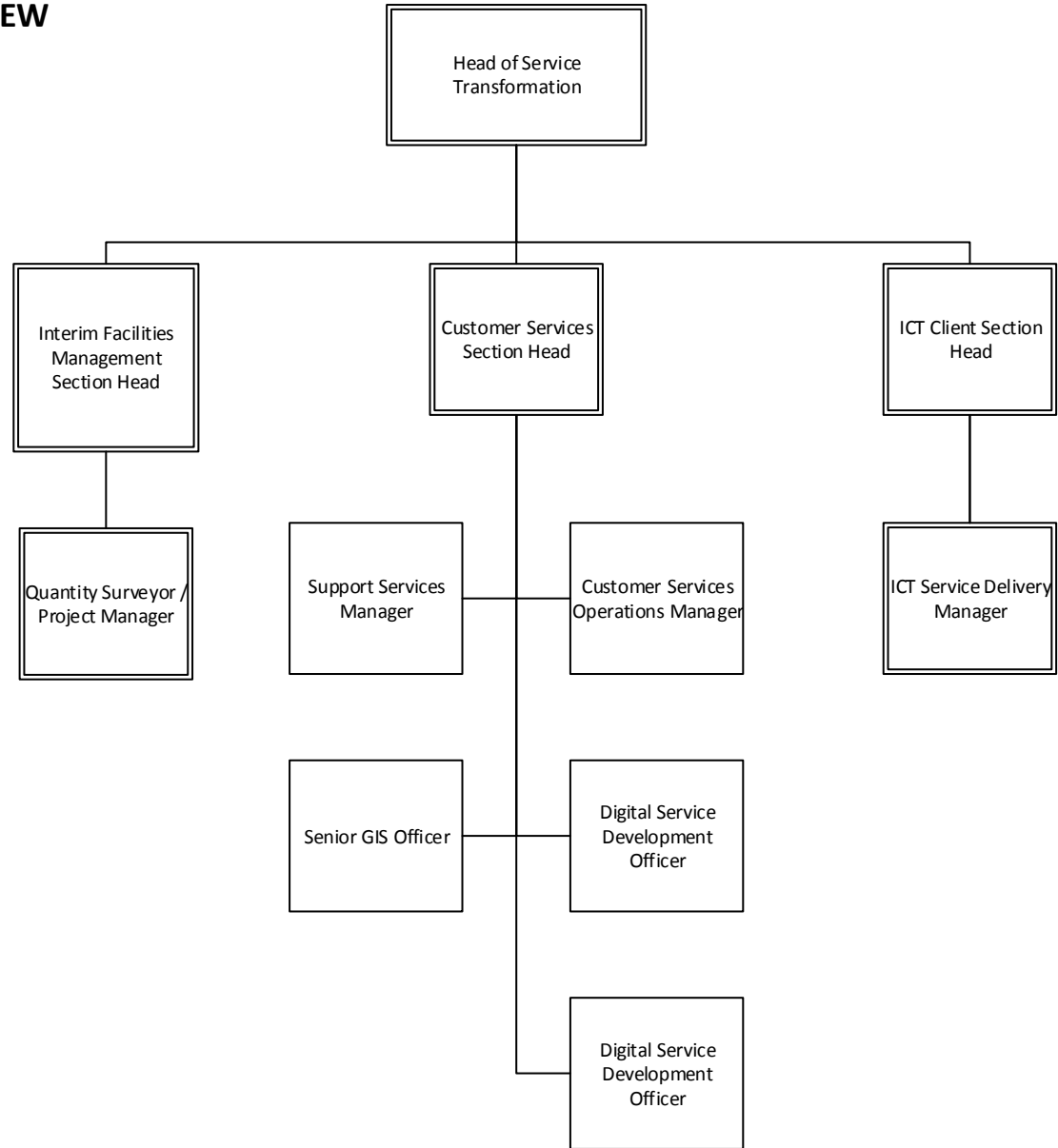
# REVENUES & BENEFITS: REVENUES TEAM (RECOVERY & BILLING)



**HUMAN RESOURCES (LEAD AUTHORITY)**

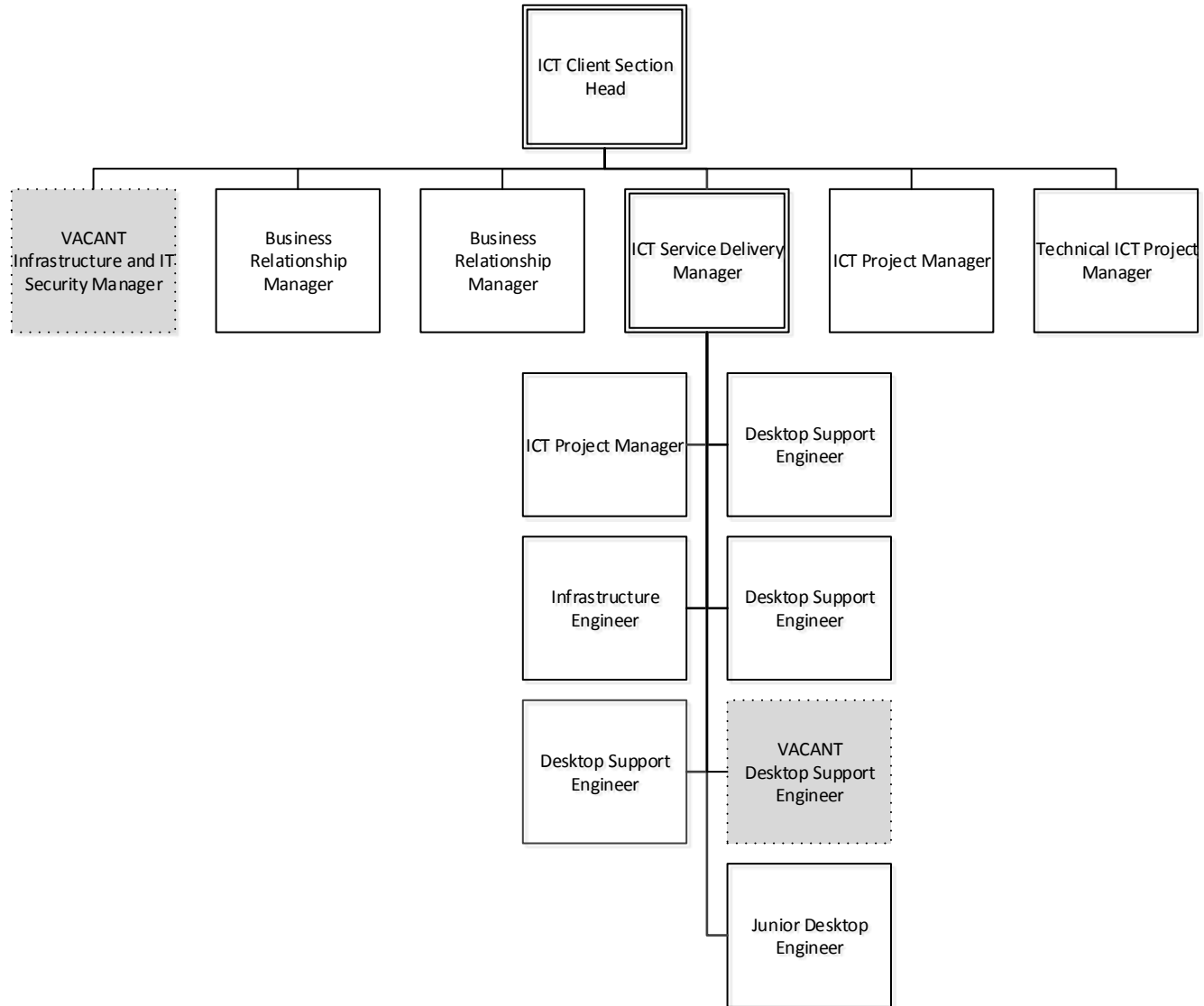


# SERVICE TRANSFORMATION: OVERVIEW





# SERVICE TRANSFORMATION: ICT





**SERVICE TRANSFORMATION: FACILITIES MANAGEMENT**

